
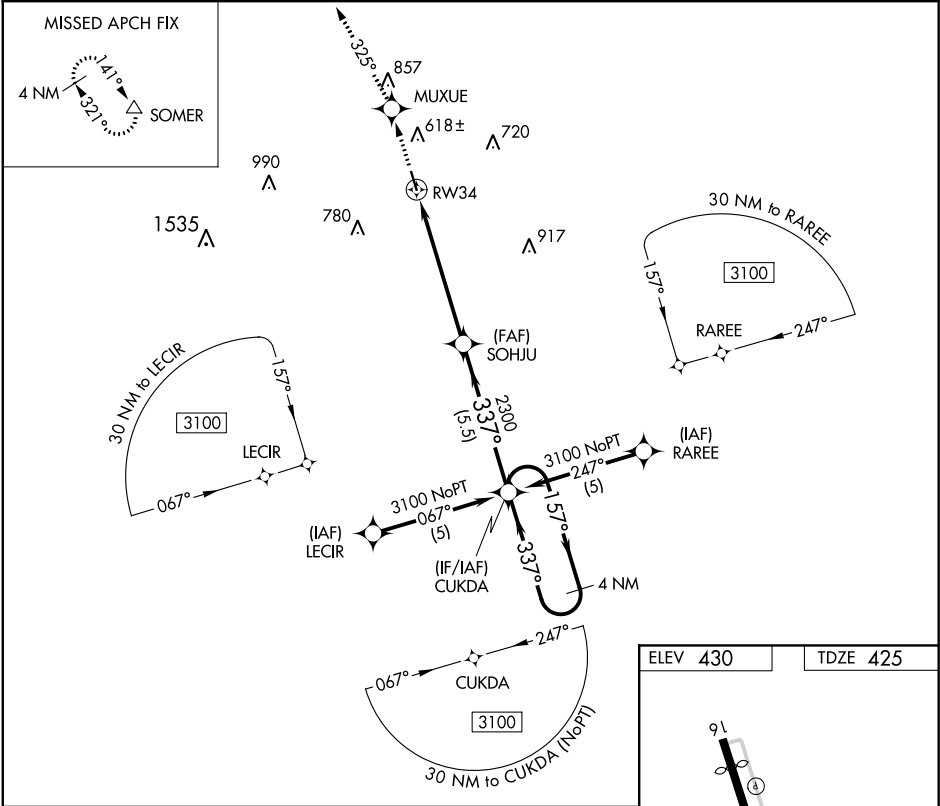




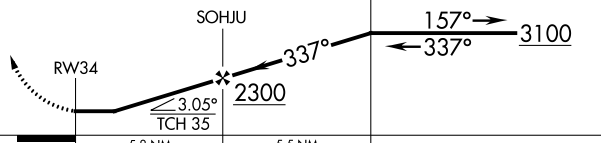

APP CRS	Rwy Idg	4000
337°	TDZE	425
	Apt Elev	430

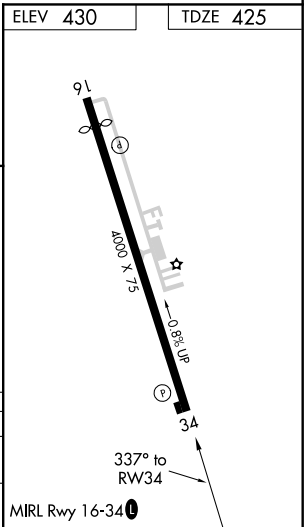
RNAV (GPS) RWY 34
PLEASANTON MUNI (P/E/Z)

RNP APCH.	MISSED APPROACH: Climb to 3000 direct MUXUE and via 325° track to SOMER and hold.
 When local altimeter setting not received, use Kelly Fld altimeter setting and increase all MDA 100 feet. Procedure NA at night. Rwy 34 helicopter visibility reduction below 1 SM NA.	

AWOS-3 118.575	SAN ANTONIO APP CON 118.05 353.5	CLNC DEL 121.375	UNICOM 122.7 (CTAF) 
-------------------	-------------------------------------	---------------------	--



3000 ↑	MUXUE 	325° tr	SOMER 				
CATEGORY		A	B	C	D		
LNAV MDA		960-1	535 (600-1)	NA			
 CIRCLING		1020-1	590 (600-1)	NA			



SC-3, 31 DEC 2020 to 28 JAN 2021

SC-3, 31 DEC 2020 to 28 JAN 2021