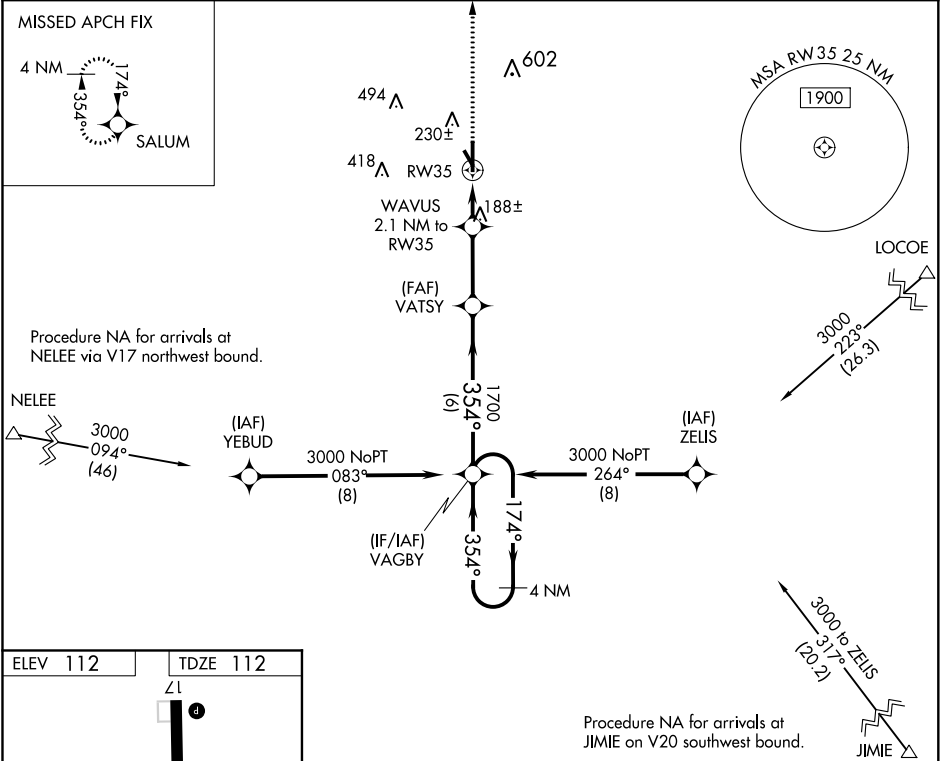


WAAS CH 49140 W35A	APP CRS 354°	Rwy Idg TDZE 112 Apt Elev 112	6006
--	------------------------	---	-------------

RNAV (GPS) RWY 35

BROOKS COUNTY (BKS)

<div><div>T</div><div>A</div></div> <div>For uncompensated Baro-VNAV systems, LNAV/VNAV NA below -15°C (5°F) or above 54°C (130°F). Circling Rwy 14 NA at night. DME/DME RNP-0.3 NA.</div>	MISSED APPROACH: Climb to 3000 direct SALUM and hold.	
AWOS-3 118.125	KINGSVILLE APP CON ★ 119.9 290.45	UNICOM 122.8 (CTAF) 0



ELEV 112	TDZE 112				
MIRL Rwy 17-35 0 REIL Rwy 17 0					
		3000 SALUM			
		WAVUS 2.1 NM to RW35			
		*LNAV only. *0.9 NM to RW35			
		RW35			
		VATSY 1700			
		VAGBY 1700			
		4 NM Holding Pattern			
		GP 3.00° TCH 45			
		CATEGORY A B C D			
		LPV DA 362-1 250 (300-1)			
		LNAV/VNAV DA 362-1 250 (300-1)			
		LNAV MDA 440-1 328 (400-1)			
		CIRCLING 580-1 468 (500-1) 680-1 568 (600-1) 940-2 828 (900-2 1/2) 940-2 828 (900-2 3/4)			

SC-3, 31 DEC 2020 to 28 JAN 2021

SC-3, 31 DEC 2020 to 28 JAN 2021