

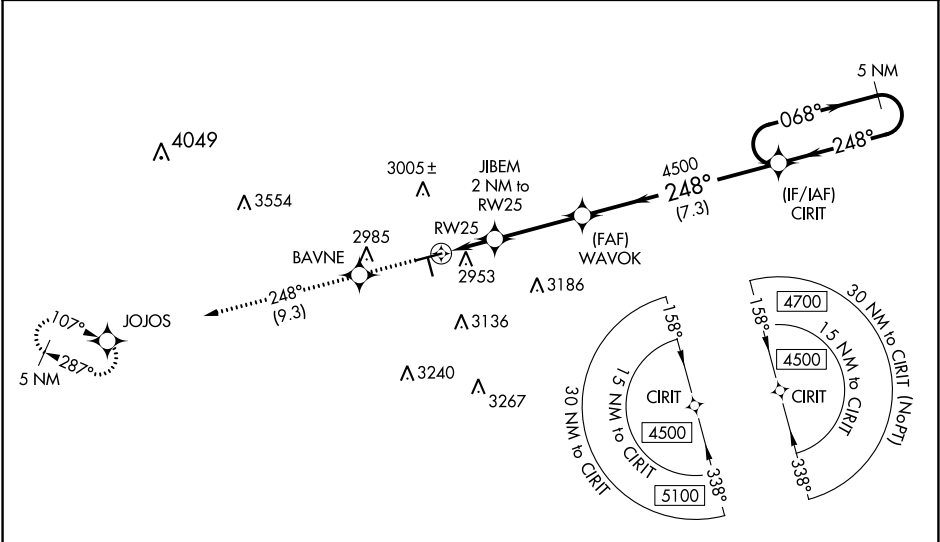
WAAS CH 72923 W25A	APP CRS 248°	Rwy Idg TDZE Apt Elev	5571 2800 2805
--	------------------------	-----------------------------	---

RNAV (GPS) RWY 25
MIDLAND AIRPARK (MDD)

⚠ Baro-VNAV NA when using Midland Intl Air and Space Port altimeter setting.
For uncompensated Baro-VNAV systems, LNAV/VNAV NA below -20°C (-4°F) or above 26°C (78°F). When local altimeter setting not received, use Midland Intl Air and Space Port altimeter setting and increase all DA 28 feet, all MDA 40 feet, increase LNAV/VNAV all Cats and LNAV Cat C/D visibility ½ mile. When VGSi inop, Straight-in/Circling Rwy 25 procedure NA at night. DME/DME RNP-0.3 NA. Helicopter visibility reduction below 1 SM NA.

MISSED APPROACH: Climb to 5000 direct BAVNE and on 248° track to JOJOS and hold.

AWOS-3 118.125	MIDLAND APP CON ★ 124.6 290.4	CLNC DEL 121.8	UNICOM 122.7 (CTAF) ①
--------------------------	---	--------------------------	---------------------------------



ELEV 2805 **D** TDZE 2800

5000 BAVNE 248° tr JOJOS VGSi and RNAV glidepath not coincident (VGSi Angle 3.00/TCH 53). 5 NM Holding Pattern

* LNAV only

JIBEM 2 NM to RW25

WAWOK 4500

CIRIT

GP 3.00° TCH 47

3460*

2 NM 3.2 NM 7.3 NM

CATEGORY	A	B	C	D
LPV DA	3081-1 281 (300-1)			
LNAV/VNAV DA	3144-1 ½ 344 (400-1 ½)			
LNAV MDA	3220-1 420 (500-1)	3220-1 ¼ 420 (500-1 ¼)		
CIRCLING	3320-1 515 (600-1)	3320-1 ½ 515 (600-1 ½)	3700-3 895 (900-3)	

MIRL Rwy 7-25 and 16-34 ①

SC-3, 31 DEC 2020 to 28 JAN 2021

SC-3, 31 DEC 2020 to 28 JAN 2021