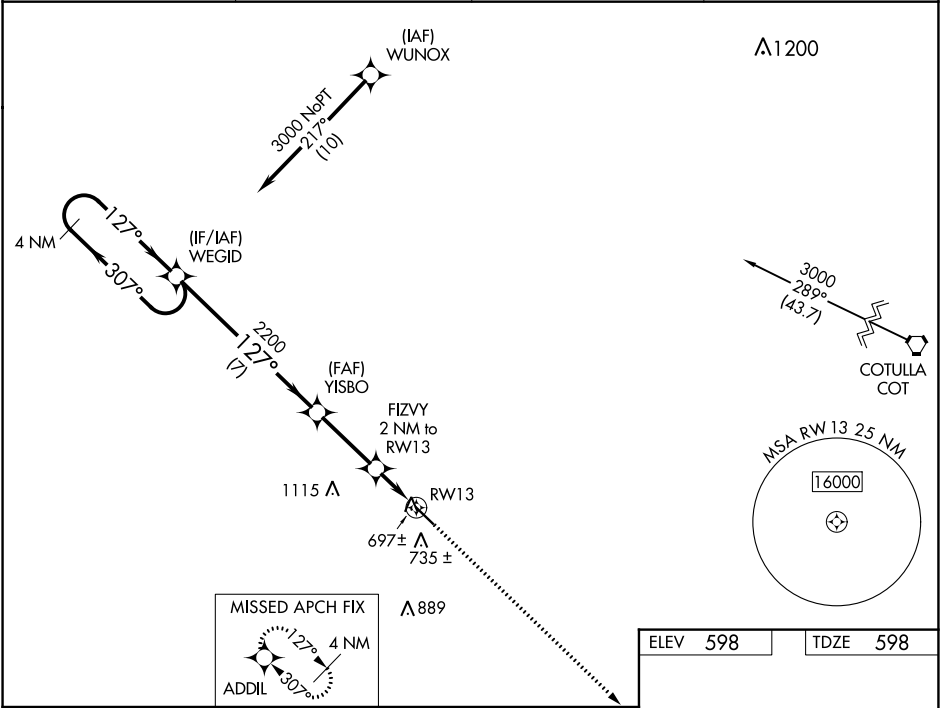


WAAS CH 82133 W13A	APP CRS 127°	Rwy Idg TDZE 598 Apt Elev 598	5003
--	------------------------	---	-------------

RNAV (GPS) RWY 13
DIMMIT COUNTY (CZT)

Baro-VNAV NA. DME/DME RNP-0.3 NA. Use Cotulla altimeter setting; when not received use Uvalde altimeter setting and increase all DA 52 feet, all MDA 60 feet and increase LPV all Cats, LNAV/VNAV all Cats, and Circling Cat C visibility ¼ mile. Helicopter visibility reduction below ¾ SM NA.	MISSED APPROACH: Climb to 3000 direct ADDIL and hold.
---	---

AWOS-3 119.625	COT ASOS 118.325	HOUSTON CENTER 127.8 307.5	UNICOM 122.8 (CTAF)
---------------------------------	-----------------------------------	---	--------------------------------------



4 NM Holding Pattern		WEGID		3000		ADDIL	
3000		YISBO		FIZVY		RW13	
GP 3.00° TCH 40		2200		2200		*1260	
7 NM		2.9 NM		2 NM		*LNAV only.	
CATEGORY	A	B	C	D			
LPV DA	940-1½	342 (400-1½)		NA			
LNAV/ VNAV DA	940-1½	342 (400-1½)		NA			
LNAV MDA	1040-1	442 (500-1)	1040-1¾ 442 (500-1½)	NA			
CIRCLING	1160-1 562 (600-1)	1240-1 642 (700-1)	1500-2¾ 902 (1000-2¾)	NA			

