

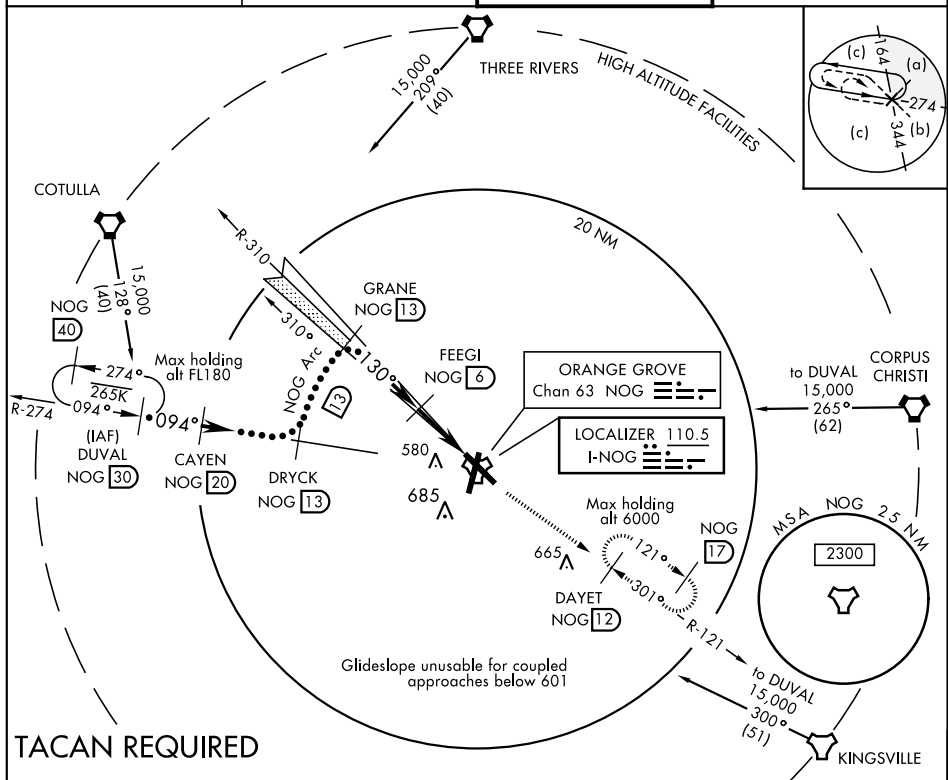
ORANGE GROVE, TEXAS

HI-ILS or LOC/DME RWY 13

LOC F-NOG <b><u>110.5</u></b>	APCH CRS <b>130°</b>	Rwy Idg THRE Arpt Elev <b>8001</b> <b>257</b> <b>257</b>	JAL-6553 [USN]	ORANGE GROVE NALF (KNOG)
----------------------------------	-------------------------	---	----------------	--------------------------

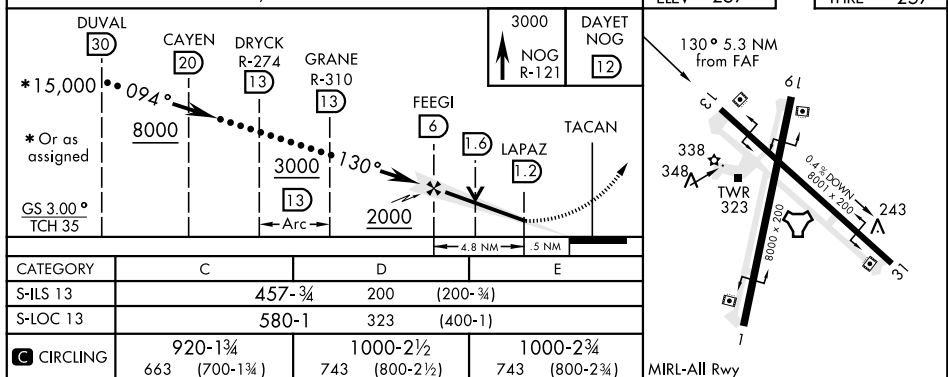
MISSED APPROACH: Climb to 3000 via NOG TACAN R-121 to DAYET and hold.

<p>ATIS ★</p> <p><b>254.35</b></p>	<p>KINGSVILLE APP CON</p> <p><b>119.90 290.45</b></p>	<p>ORANGE GROVE TOWER ★</p> <p><b>281.425 318.85</b></p>	<p>GND CON</p> <p><b>229.4</b></p>
------------------------------------	---	--	------------------------------------



## TACAN REQUIRED

EMERG SAFE ALT 100 NM 16,200



ORANGE GROVE, TEXAS

27°54'N-98°03'W

ORANGE GROVE NALF (KNOG)

Amdt 1 28MAR19

HI-ILS or LOC/DME RWY 13