

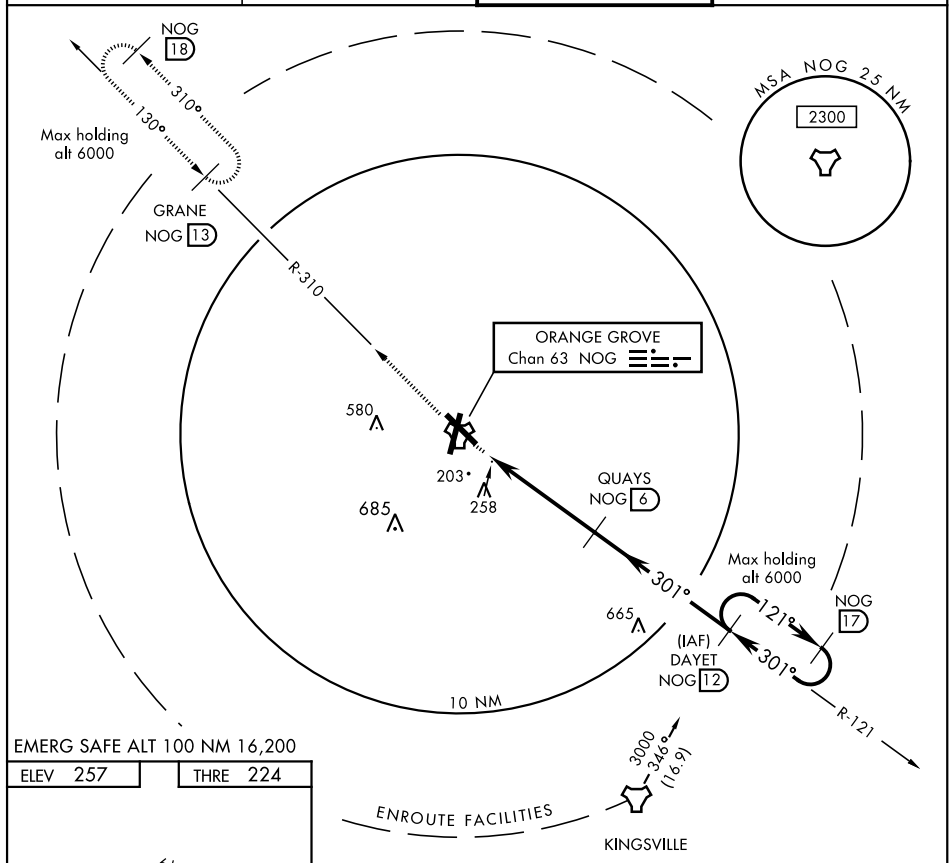
ORANGE GROVE, TEXAS

TACAN RWY 31

TACAN Chan	NOG 63	APCH CRS 301°	Rwy Idg THRE Arpt Elev	8001 224 257	AL-6553 [USN]	TACAN RWY 31	ORANGE GROVE NALF (KNOG)
---------------	------------------	-------------------------	------------------------------	---	---------------	--------------	--------------------------

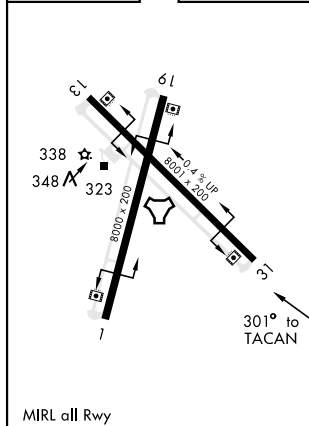
MISSED APPROACH: Climb to 3000 via NOG TACAN R-310 to GRANE and hold.

<p>ATIS ★</p> <p>254.35</p>	<p>KINGSVILLE APP CON</p> <p>119.90 290.45</p>	<p>ORANGE GROVE TOWER ★</p> <p>281.425 318.85</p>	<p>GND CON</p> <p>229.4</p>
------------------------------------	---	--	------------------------------------



EMERG SAFE ALT 100 NM 16,200

ELEV 257		THRE 224
----------	--	----------



CATEGORY	A	B	C	D
S-31	560-1	336	(400-1)	
C CIRCLING	660-1 403 (500-1)	720-1 463 (500-1)	920-1½ 663 (700-1½)	1000-2½ 743 (800-2½)

ORANGE GROVE, TEXAS

27°54'N-98°03'W

ORANGE GROVE NALF (KNOG)

TACAN RWY 31

SC-3, 31 DEC 2020 to 28 JAN 2021

SC-3, 31 DEC 2020 to 28 JAN 2021