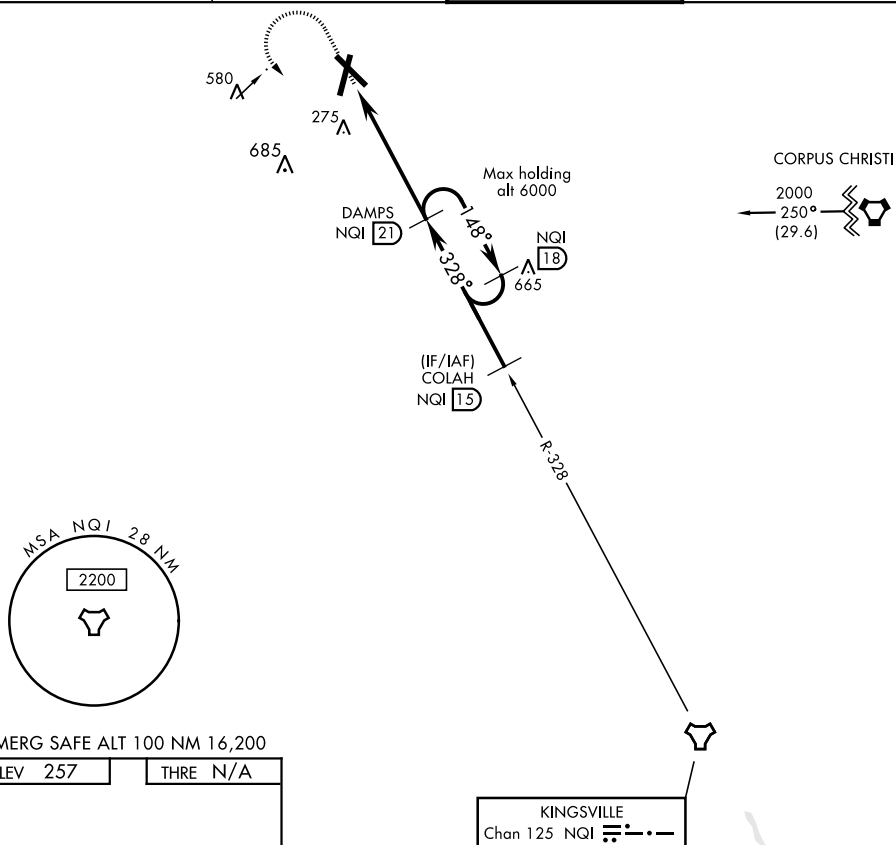


# TACAN-A

TACAN Chan <b>125</b>	APCH CRS <b>328°</b>	Rwy Idg THRE Arpt Elev <b>N/A</b> <b>N/A</b> <b>257</b>	AL-6553 [USN]	ORANGE GROVE NALF (KNOG)
--------------------------	-------------------------	--	---------------	--------------------------

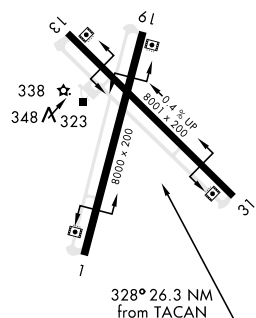
**MISSED APPROACH:** Climb to 2000 via NQI TACAN R-328, then left turn via NQI R-328 to DAMPS and hold.

<p>ATIS ★</p> <p><b>254.35</b></p>	<p>KINGSVILLE APP CON</p> <p><b>119.90 290.45</b></p>	<p>ORANGE GROVE TOWER ★</p> <p><b>281.425 318.85</b></p>	<p>GND CON</p> <p><b>229.4</b></p>
------------------------------------	---	--	------------------------------------



EMERG SAFE ALT 100 NM 16,200

ELEV 257		THRE N/A
----------	--	----------



MIRL all Rwy

CATEGORY	A	B	C	D
CIRCLING	660-1 403 (500-1)	720-1½ 463 (500-1½)	920-1¾ 663 (700-1¾)	1000-2½ 743 (800-2½)

ORANGE GROVE, TEXAS

27°54'N-98°03'W

ORANGE GROVE NALF (KNOG)

# TACAN-A