

WAAS CH 53608 W17A	APP CRS 173°	Rwy Idg 4605 TDZE 1827 Apt Elev 1827
--	------------------------	---

RNAV (GPS) RWY 17

CURTIS FIELD (BBD)

RNP APCH.

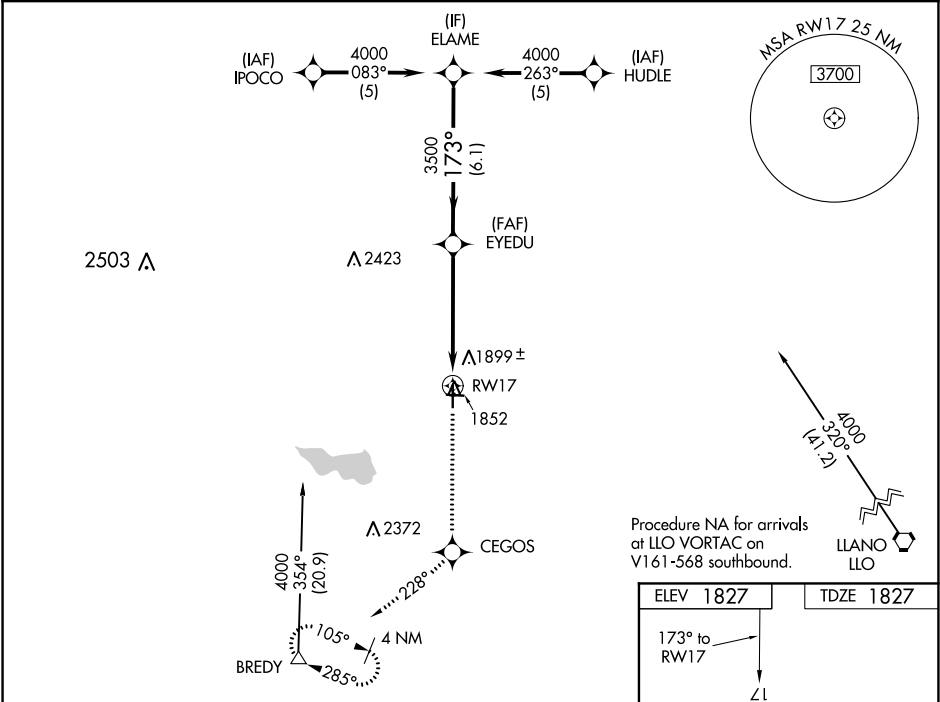
▼

▲

For uncompensated Baro-VNAV systems, LNAV/VNAV NA below -18°C (0°F) or above 54°C (130°F). When local altimeter setting not received, use Junction altimeter setting and increase all DA/MDA 120 feet, increase LPV all Cats visibility ¼ mile, LNAV/VNAV all Cats visibility ½ mile, and LNAV Cat C visibility ½ mile. VDP and Baro-VNAV NA when using Junction altimeter setting.

MISSED APPROACH: Climb to 4000 direct CEGOS and on track 228° to BREDY and hold.

AWOS-3 118.375	HOUSTON CENTER 132.35 317.5	UNICOM 122.8 (CTAF) 0
--------------------------	---------------------------------------	---------------------------------



Procedure Turn NA		ELAME	<div><div>4000</div><div>↑</div></div>		<div><div>CEGOS</div><div>✦</div></div>	<div><div>tr 228°</div><div></div></div>	<div><div>BREDY</div><div>△</div></div>	
GP 3.00° TCH 40		<div><div>4000</div><div>173°</div></div>	<div><div>EYEDU</div><div>3500</div><div>✖</div></div>	<div><div>*1.7 NM to RW17</div><div>↓</div></div>				<div><div>*LNAV only.</div></div>
		<div><div>3500</div><div>⚡</div></div>	<div><div>6.1 NM</div><div>3.4 NM</div><div>1.7 NM</div></div>					<div><div>RW17</div><div>↗</div></div>
CATEGORY		A	B	C	D			
LPV DA		2077-1 250 (300-1)				NA		
LNAV/VNAV DA		2191-1¼ 364 (400-1¼)				NA		
LNAV MDA		2420-1 593 (600-1)		2420-1½ 593 (600-1½)		NA		

