

WAAS CH 97430 W13A	APP CRS 129°	Rwy Idg 3700 TDZE 80 Apt Elev 80
--	------------------------	---

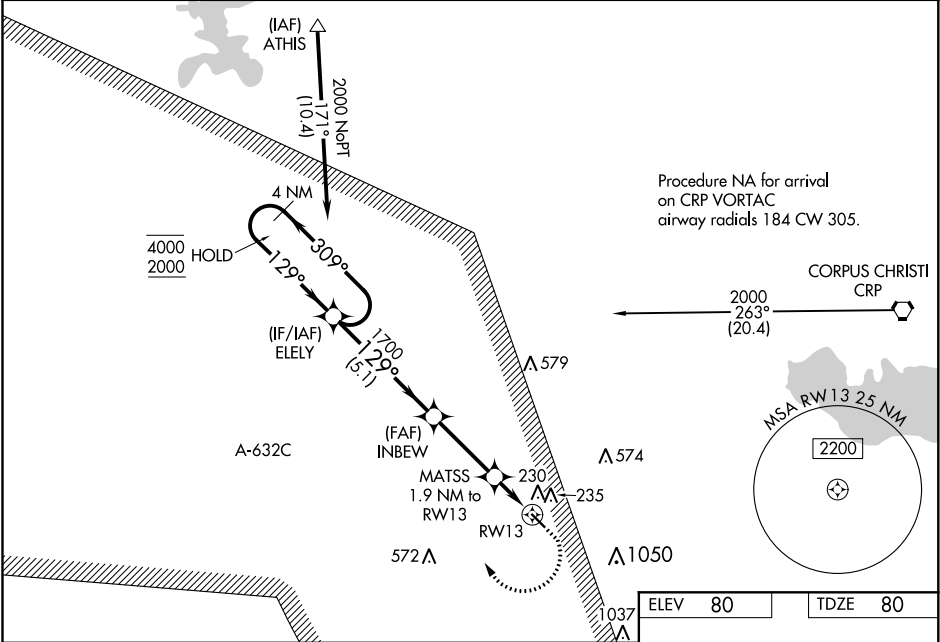
RNAV (GPS) RWY 13
NUECES COUNTY (RBO)

RNP APCH.

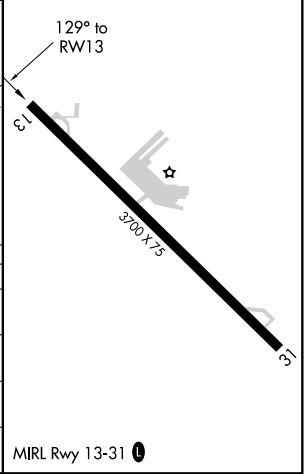
⚠ Circling NA northeast of Rwy 13-31. Procedure NA at night. Baro-VNAV and VDP NA when using Corpus Christi Intl altimeter setting. For uncompensated Baro-VNAV systems, LNAV/VNAV NA below -15°C or above 54°C. When local altimeter setting not received, use Corpus Christi Intl altimeter setting and increase LPV DA to 358 feet, LNAV/VNAV DA to 400 feet and all MDA 40 feet.

MISSED APPROACH: Climb to 540 then climbing right turn to 2000 direct ELEY and hold.

AWOS-3 118.175	KINGSVILLE APP CON ★ 119.9 290.45	CTAF 122.9	122.8 0
--------------------------	---	----------------------	----------------



4 NM Holding Pattern		ELEY		INBEW		MATSS 1.9 NM to RWY 13		*LNAV only.	
4000 2000		309° 129°		1700		1700		540 2000 ELEY	
GP 3.00° TCH 40		129°		1700		*720		1.1 NM to RWY 13	
		5.1 NM		3.1 NM		0.8 NM		1.1 NM	
CATEGORY		A		B		C		D	
LPV DA		330-1		250 (300-1)				NA	
LNAV/VNAV DA		372-1		292 (300-1)				NA	
LNAV MDA		480-1		400 (400-1)				NA	
CIRCLING		540-1 460 (500-1)		640-1 560 (600-1)				NA	



SC-3, 31 DEC 2020 to 28 JAN 2021

SC-3, 31 DEC 2020 to 28 JAN 2021