

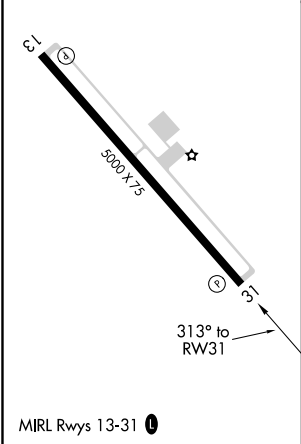
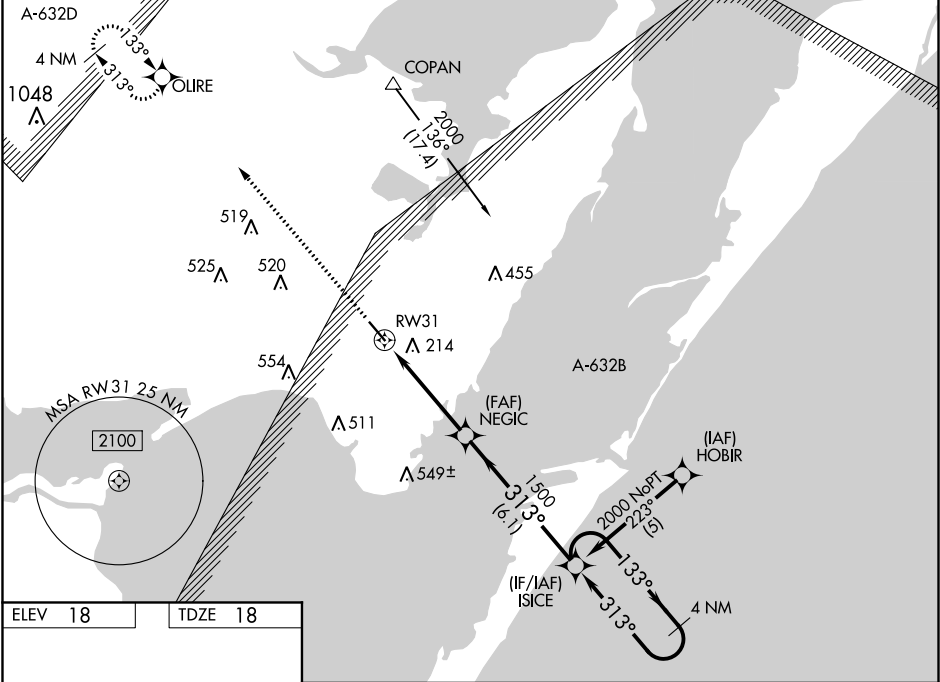
WAAS Ch <b>82601</b> <b>W31A</b>	APP CRS <b>313°</b>	Rwy Idg <b>5000</b> TDZE <b>18</b> Apt Elev <b>18</b>
--	------------------------	---

**RNAV (GPS) RWY 31**  
MCCAMPBELL-PORTER (TFP)

**A** BARO-VNAV NA when using Mustang Beach altimeter setting. For uncompensated BARO-VNAV systems, LNAV/VNAV NA below -15°C (5°F) or above 48°C (118°F).  
**W** When local altimeter setting not received, use Mustang Beach altimeter setting and increase LPV DA to 291 feet; LNAV/VNAV DA to 533 feet; and all MDAs 40 feet; increase LNAV Cat C visibility ¼ mile. VDP NA when using Mustang Beach altimeter setting. DME/DME RNP-0.3 NA.

**MISSED APPROACH:**  
Climb to 2100 direct  
OLIRE and hold.

AWOS-3 <b>118.775</b>	CORPUS APP CON <b>120.9 348.725</b>	UNICOM <b>122.7 (CTAF) 0</b>
--------------------------	--	---------------------------------



2100	OLIRE	VGSI and descent angles not coincident (VGSI Angle 3.00/TCH 33).	ISICE	4 NM Holding Pattern
*LNAV only				
*1.3 NM to RW31				
RW31				
1.3 NM	3.1 NM	6.1 NM		
CATEGORY	A	B	C	D
LPV DA		268-1	250 (300-1)	
LNAV/VNAV DA		510-1¾	492 (500-1¾)	
LNAV MDA	480-1	462 (500-1)	480-1¼ 462 (500-1¼)	480-1½ 462 (500-1½)
CIRCLING	520-1	502 (600-1)	520-1½ 502 (600-1½)	580-2 562 (600-2)

SC-3, 31 DEC 2020 to 28 JAN 2021

SC-3, 31 DEC 2020 to 28 JAN 2021