

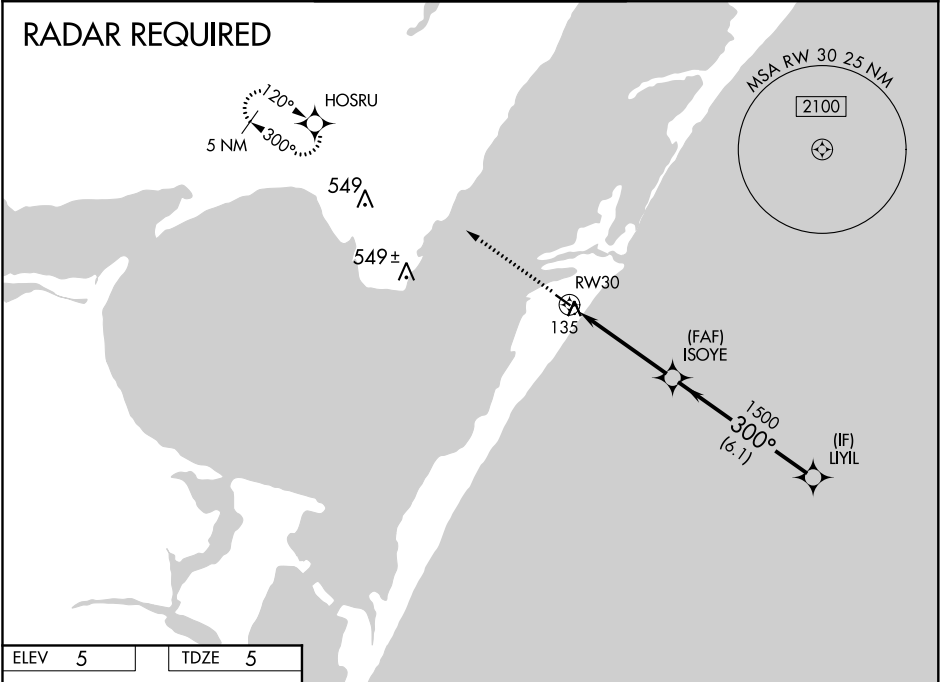
WAAS CH <b>63000</b> <b>W30A</b>	APP CRS <b>300°</b>	Rwy Idg <b>3482</b> TDZE <b>5</b> Apt Elev <b>5</b>
--	------------------------	---

**RNAV (GPS) RWY 30**  
MUSTANG BEACH (R.A.S)

**⚠** DME/DME RNP-0.3 NA. For uncompensated Baro-VNAV systems, LNAV/VNAV NA below -1.5°C (5°F) or above 44°C (111°F). If local altimeter setting not received, use Corpus Christi Intl altimeter setting and increase all DAs/MDAs 60 feet. Baro-VNAV and VDP NA when using Corpus Christi Intl altimeter setting.

MISSED APPROACH: Climb to 2000 direct HOSRU and hold.

AWOS-3 <b>118.425</b>	CORPUS CHRISTI APP CON <b>125.4 307.9</b>	CTAF <b>122.9</b>
--------------------------	--	----------------------



ELEV 5	TDZE 5
--------	--------

2000 HOSRU

**\* LNAV only**

ISOYE

1500

300°

3000

GP 3.00° TCH 35

1.3 NM

3.2 NM

6.1 NM

RW30

3482 X 70

300° to RW30

MIRL Rwy 12-30

Procedure Turn NA

GP 3.00° TCH 35

CATEGORY	A	B	C	D
LPV DA	362-1¼	357 (400-1¼)	NA	
LNAV/VNAV DA	435-1½	430 (500-1½)	NA	
LNAV MDA	440-1	435 (500-1)	NA	
CIRCLING	500-1	495 (500-1)	NA	

SC-3, 31 DEC 2020 to 28 JAN 2021

SC-3, 31 DEC 2020 to 28 JAN 2021