

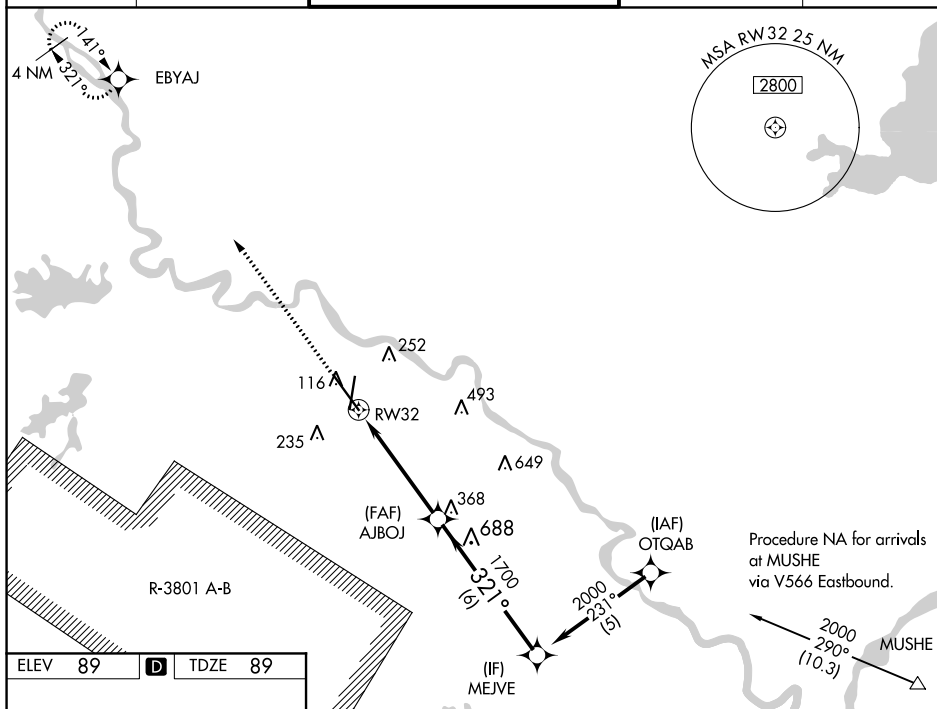
WAAS CH 50110 W32A	APP CRS 321°	Rwy Idg 9352 TDZE 89 Apt Elev 89
--	------------------------	---

RNAV (GPS) RWY 32
ALEXANDRIA INTL (AEX)

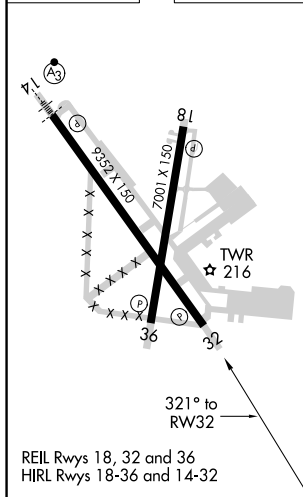
T DME/DME RNP-0.3 NA.
Baro-VNAV NA below -15°C (5°F)
When R-3801A-B active, RADAR required.

MISSED APPROACH: Climb to 3000 direct EBYAJ WP and hold.

ASOS 123.975	POLK APP CON 125.4 254.8	ALEXANDRIA TOWER 127.35 (CTAF) 269.2	GND CON 121.9 372.0	CLNC DEL 121.9
------------------------	------------------------------------	--	-------------------------------	--------------------------



ELEV	89	D	TDZE	89
------	----	----------	------	----



3000 ↑	EBYAJ ✳	VGSJ and RNAV glidepath not coincident. (VGSJ Angle 3.00/TCH 64).		Procedure Turn NA
*LNAV only.				
CATEGORY	A	B	C	D
LPV DA	340/50 251 (300-1)			
LNAV/VNAV DA	460/60 371 (400-1¼)			
LNAV MDA	520/50 431 (500-1)	520/60 431 (500-1¼)	520-1½ 431 (500-1½)	
CIRCLING	540-1¼ 451 (500-1¼)	560-1¼ 471 (500-1¼)	560-1½ 471 (500-1½)	640-2 551 (600-2)