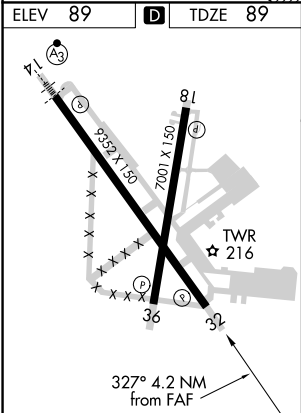
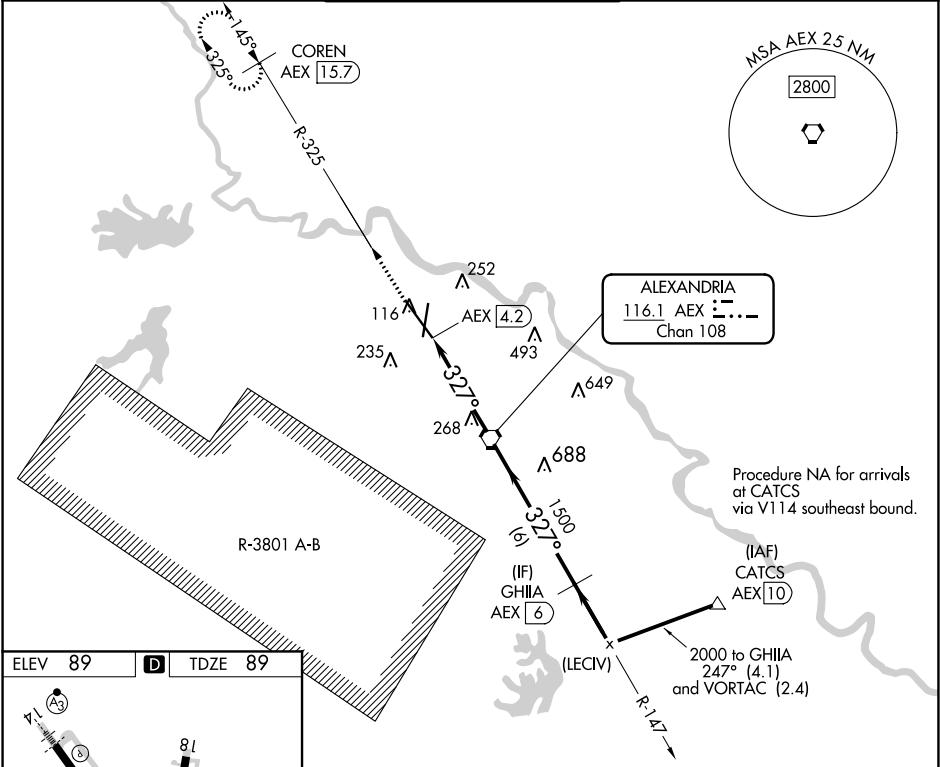


VORTAC AEX	APP CRS	Rwy Idg	9352
116.1	327°	TDZE	89
Chan 108		Apt Elev	89

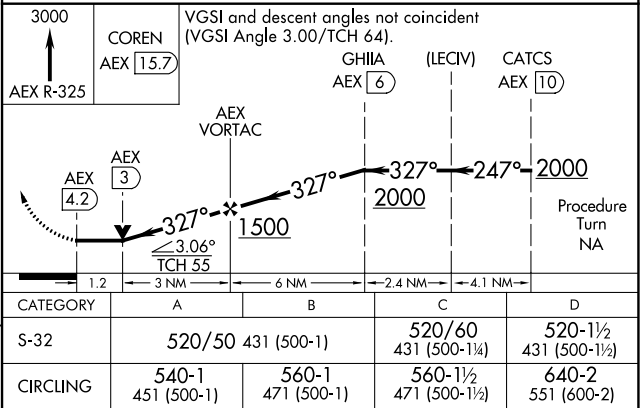
VOR/DME RWY 32
ALEXANDRIA INTL (AEX)

RADAR required when R-3801 A-B in use.		MISSED APPROACH: Climb to 3000 via AEX R-325 to COREN/AEX 15.7 DME and hold.	
--	--	--	--

ASOS 123.975	POLK APP CON 125.4 254.8	ALEXANDRIA TOWER 127.35 (CTAF) 269.2	GND CON 121.9 372.0	CLNC DEL 121.9
------------------------	------------------------------------	--	-------------------------------	--------------------------



REIL Rwy 18, 32 and 36
HIRL Rwy 18-36 and 14-32



SC-4, 31 DEC 2020 to 28 JAN 2021

SC-4, 31 DEC 2020 to 28 JAN 2021