

|               |             |             |
|---------------|-------------|-------------|
| LOC/DME I-BTR | APP CRS     | Rwy Idg     |
| <b>110.3</b>  | <b>133°</b> | <b>6408</b> |
| Chan 40       |             | TDZE        |
|               |             | <b>67</b>   |
|               |             | Apt Elev    |
|               |             | <b>70</b>   |

# ILS or LOC RWY 13

BATON ROUGE METROPOLITAN, RYAN FIELD (BTR)

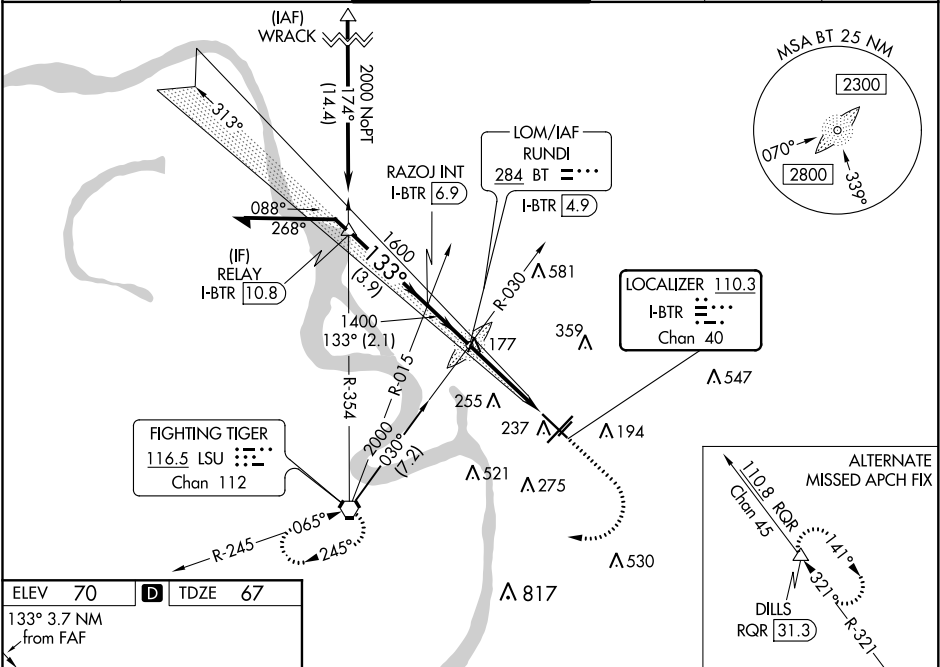
**ASR**

For inop MALS when using Hammond altimeter setting, increase S-ILS 13 all Cats visibility to ½ mile, and S-LOC 13 visibility to 1½ mile. VDP NA with Hammond altimeter setting. When local altimeter setting not received, use Hammond altimeter setting and increase all DA 91 feet and all MDA 100 feet, increase S-LOC 13 Cats C and D visibility ½ mile, increase Circling Cats C and D visibility ¼ mile. For inop MALS, increase S-LOC 13 Cats C and D to 1½ mile.

**MALS**

**MISSED APPROACH:**  
Climb to 700 then climbing right turn to 2000 direct LSU VORTAC and hold.

|              |                       |                            |              |              |               |
|--------------|-----------------------|----------------------------|--------------|--------------|---------------|
| ATIS         | BATON ROUGE APP CON ★ | RYAN TOWER ★               | GND CON      | CLNC DEL     | UNICOM        |
| <b>125.2</b> | <b>120.3 278.3</b>    | <b>118.45 (CTAF) 257.8</b> | <b>121.9</b> | <b>119.4</b> | <b>122.95</b> |



ELEV 70 TDZE 67

133° 3.7 NM from FAF

258

TWR 185

TDZ/CL Rwy 22R

HIRL Rwy 13-31 and 4L-22R

MIRL Rwy 4R-22L

FAF to MAP 3.7 NM

|         |      |      |      |      |      |
|---------|------|------|------|------|------|
| Knots   | 60   | 90   | 120  | 150  | 180  |
| Min:Sec | 3:42 | 2:28 | 1:51 | 1:29 | 1:14 |

Diagram showing the 133° S-LOC 13 glideslope and the 110.3 I-BTR localizer course. The diagram includes the 2000 MSL (1740' AGL) and the 2000 MSL (1740' AGL) with a 1.4:1 slope. The diagram also shows the 2000 MSL (1740' AGL) and the 2000 MSL (1740' AGL) with a 1.4:1 slope.

|   |  |  |  |
|---|--|--|--|
| CATEGORY  |  |  |  |
| A   |  |  |  |
| B   |  |  |  |
| C   |  |  |  |
| D   |  |  |  |
| S-ILS 13  |  |  |  |
| 267-½ 200 (200-½)   |  |  |  |
| S-LOC 13  |  |  |  |
| 480-½ 413 (500-½) 480-¾ 413 (500-¾)                                       |  |  |  |
| CIRCLING  |  |  |  |
| 560-1 490 (500-1) 660-1 590 (600-1) 780-2 710 (800-2) 840-2½ 770 (800-2½) |  |  |  |