

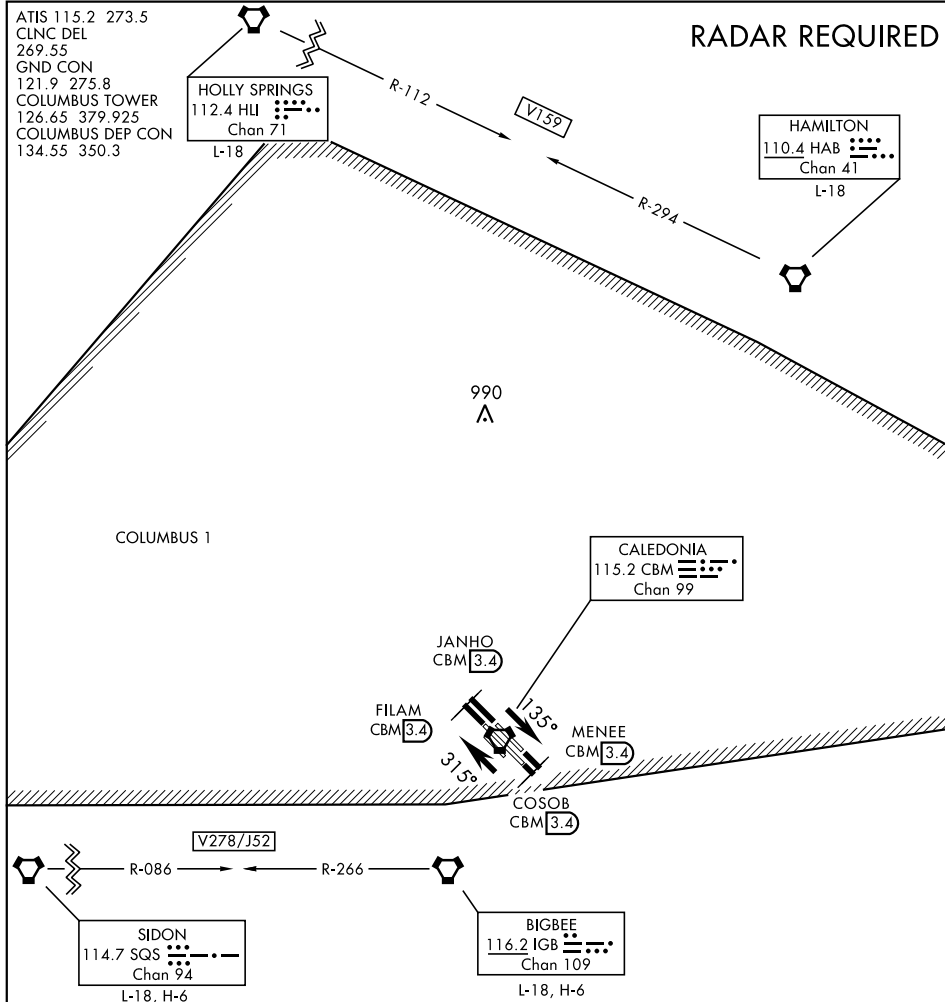
20086

COLUMBUS FOUR DEPARTURE

SHL-91 [USAF]

COLUMBUS AFB (KCBM)

COLUMBUS, MISSISSIPPI



DEPARTURE ROUTE DESCRIPTION

NOTE: Rwy 13/31C departure will be towards a raised MA-1A barrier approximately 110' into the overrun and 4' high.

TAKE-OFF RWY 13C: Climb on heading 135° to intercept CBM VORTAC R-138, direct COSOB (CBM R-138/3.4 DME), then via ATC instructions.

TAKE-OFF RWY 13L: Climb on heading 135° to intercept CBM VORTAC R-132, direct MENEE (CBM R-132/3.4 DME), then via ATC instructions.

TAKE-OFF RWY 31C: Climb on heading 315° to intercept CBM VORTAC R-312, direct FILAM (CBM R-312/3.4 DME), then via ATC instructions.

TAKE-OFF RWY 31R: Climb heading 315° to intercept CBM VORTAC R-318, direct JANHO (CBM R-318/3.4 DME), then via ATC instructions.

COLUMBUS FOUR DEPARTURE

COLUMBUS, MISSISSIPPI
COLUMBUS AFB (KCBM)

SC-4, 31 DEC 2020 to 28 JAN 2021