

## RNAV (GPS) RWY 31C

APCH CRS	Rwy Idg	12,004
315°	TDZE	213
	Arpt Elev	218

AL-91 (USAF)

COLUMBUS AFB (KCBM)

**T** \* When ALS inop, increase vis to 1 1/4 miles.  
 \*\* When ALS inop, increase CAT AB RVR to 55, vis to 1 mile;  
 CAT CDE vis to 1 3/4 miles.

ALSF-1

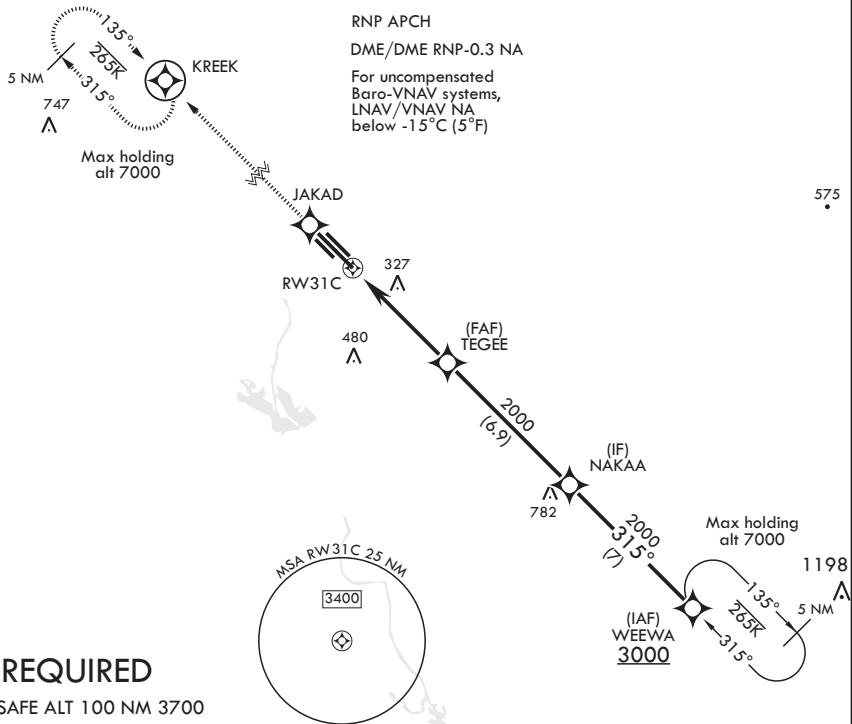
**MISSED APPROACH:** Climb to 4000 direct JAKAD, direct KREEK and hold.

ATIS  
115.2 273.5

APP CON  
126.075 239.25 N  
134.55 350.3 SE  
135.6 323.275 SW

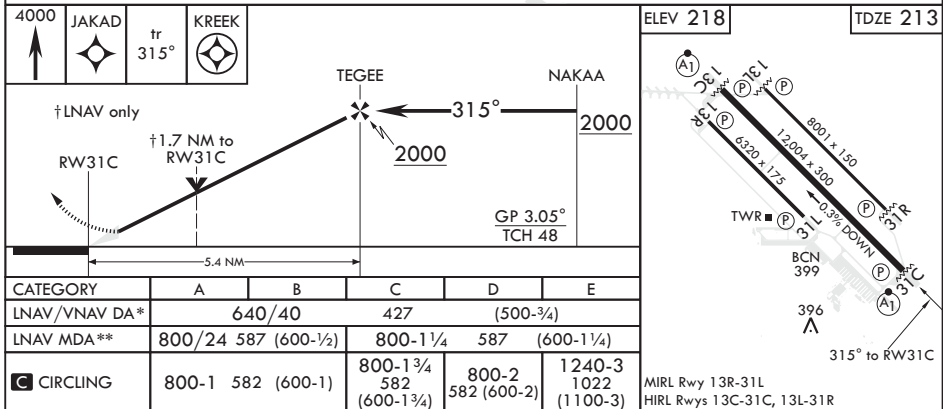
TOWER  
126.65 379.925

GND CON  
121.9 275.8

CLNC DEL  
269.55

## GPS REQUIRED

EMERG SAFE ALT 100 NM 3700



COLUMBUS, MISSISSIPPI

33°39'N - 88°27'W

COLUMBUS AFB (KCBM)

Amdt 1 27FEB20

RNAV (GPS) RWY 31C

SC-4, 31 DEC 2020 to 28 JAN 2021

SC-4, 31 DEC 2020 to 28 JAN 2021