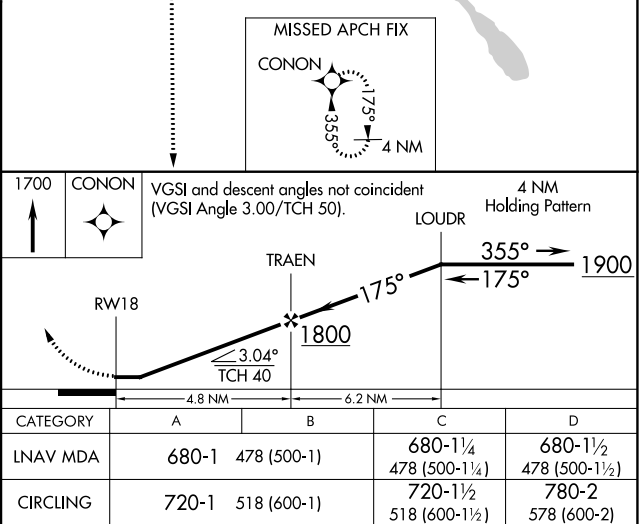
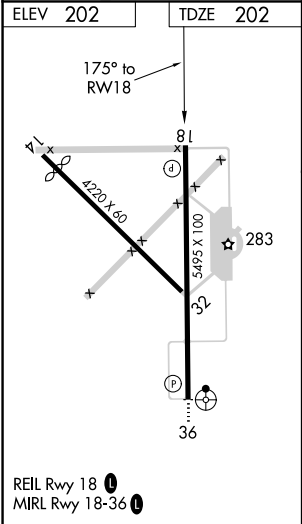
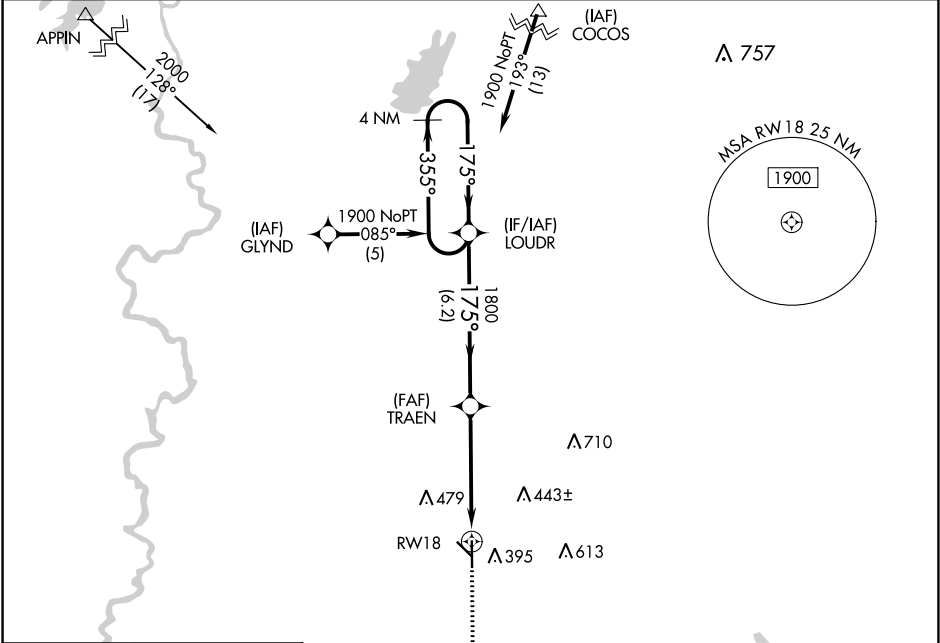


APP CRS	Rwy Idg	5495
175°	TDZE	202
	Apt Elev	202

RNAV (GPS) RWY 18
BEAUREGARD RGNL (DRI)

<p>⚠ DME/DME RNP-0.3 NA. Visibility reduction by helicopters NA. When local altimeter setting not received, use Fort Polk altimeter setting and increase all MDA 60 feet, and LNAV visibility Cat C and D ¼ mile.</p>	<p>MISSED APPROACH: Climb to 1700 direct CONON and hold.</p>
--	--

AWOS-3PT 118.225	POLK APP CON 123.7 261.3	UNICOM 122.8 (CTAF) 0
---------------------	-----------------------------	---------------------------------



SC-4, 31 DEC 2020 to 28 JAN 2021

SC-4, 31 DEC 2020 to 28 JAN 2021