

APP CRS
355°

Rwy Idg
TDZE
Apt Elev

5495
197
202

RNAV (GPS) RWY 36

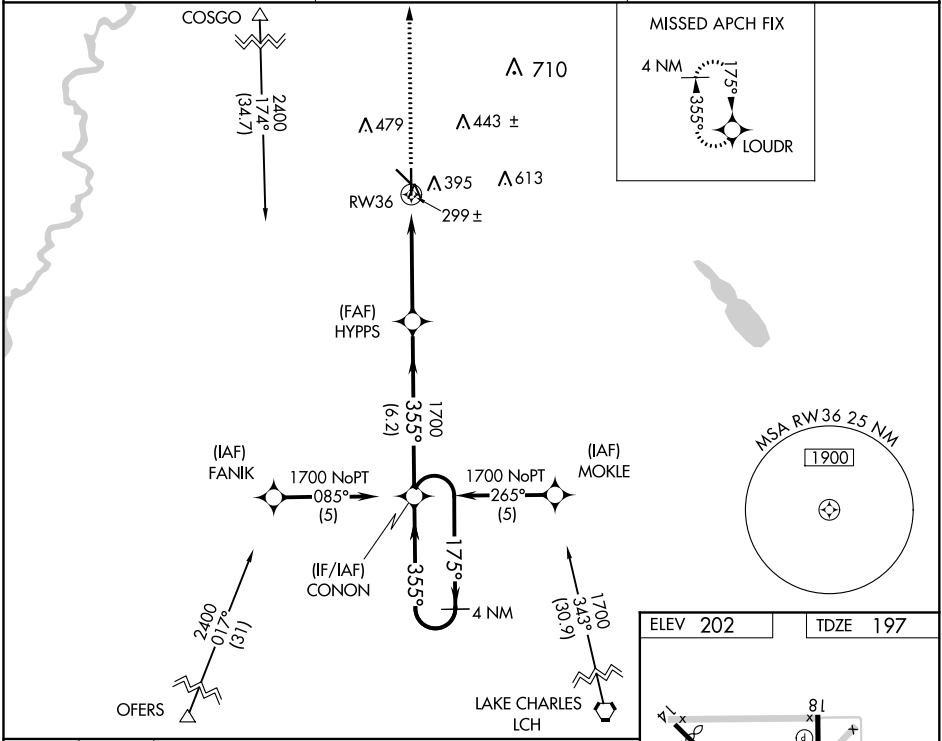
BEAUREGARD RGNL (DRI)

⚠ Inoperative table does not apply. For uncompensated Baro-VNAV systems, LNAV/VNAV NA below -15°C (5°F) or above 48°C (118°F). DME/DME RNP-0.3 NA. Visibility reduction by helicopters NA. When local altimeter setting not received, use Fort Polk altimeter setting and increase all DA 53 feet, and all MDA 60 feet, increase LNAV/VNAV all Cats and LNAV Cat C and D visibility ¼ mile.

ODALS

MISSED APPROACH:
Climb to 1900 direct LOUDR and hold.

AWOS-3PT 118.225	POLK APP CON 123.7 261.3	UNICOM 122.8 (CTAF) 0
---------------------	-----------------------------	---------------------------------



1900
↑

LOUDR

VGSI and RNAV glidepath not coincident (VGSI Angle 3.00/TCH 50).

4 NM Holding Pattern

RW36

HYPPS

CONON

1700

355°

174°

GP 3.00° TCH 40

4.5 NM

6.2 NM

CATEGORY	A	B	C	D
LNAV/VNAV DA	569-1¼ 372 (400-1¼)			
LNAV MDA	660-1	463 (500-1)	660-1¼ 463 (500-1¼)	660-1½ 463 (500-1½)
CIRCLING	720-1	518 (600-1)	720-1½ 518 (600-1½)	780-2 578 (600-2)

REIL Rwy 18 **0**

MIRL Rwy 18-36 **0**

36

355° to RW36