
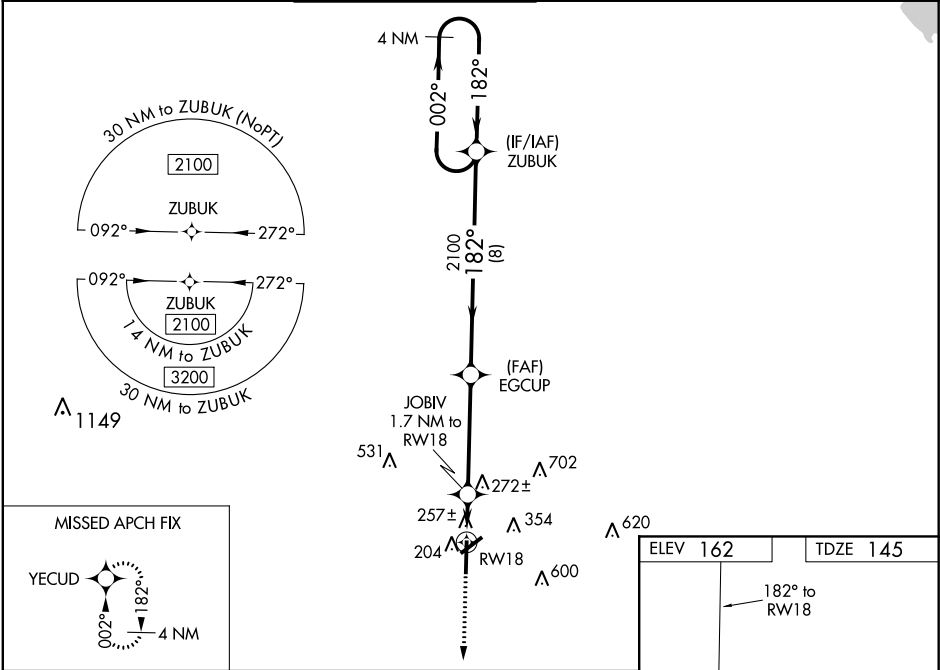


|  |                        |                             |   |
|--|------------------------|-----------------------------|---|
| WAAS<br>CH <b>50199</b><br><b>W18A</b> | APP CRS<br><b>182°</b> | Rwy ldg<br>TDZE<br>Apt Elev | <b>6501</b><br><b>145</b><br><b>162</b> |
|--|------------------------|-----------------------------|---|

RNAV (GPS) RWY 18  
GREENWOOD-LEFLORE (GWO)

|   |  |  |
|---|--|--|
| For uncompensated Baro-VNAV systems, LNAV/VNAV NA below -22°C (-8°F) or above 54°C (130°F). DME/DME RNP-0.3 NA. Baro-VNAV and VDP NA when using Greenville altimeter setting. For inop ALS when using Greenville altimeter setting, increase LPV all Cats visibility to 1½ SM, and LNAV/VNAV all Cats to 1¾ SM, and LNAV Cat A/B to 1 SM, and Cat C/D to 1¾ SM. When local altimeter setting not received, use Greenville altimeter setting: increase LPV DA to 580 feet and visibility ¼ SM, LNAV/VNAV DA to 675 feet and visibility ¾ SM; increase all MDAS 120 feet and visibility LNAV Cat C/D ¼ SM and Circling Cat C ½ SM. For inop ALS, increase LNAV/VNAV all Cats visibility to 1¾ SM, and LNAV all Cats to 1 SM. Rwy 18 helicopter visibility reduction below ¾ SM NA. Rwy 5, 23, 27 helicopter visibility reduction below 1 SM NA. Circling Rwy 5, 23, 27 NA at night. | MALSR<br> | MISSED APPROACH:<br>Climb to 2100 direct YECUD and hold. |
|---|--|--|

|                        |                                      |   |                                |                           |                         |
|------------------------|--------------------------------------|---|--------------------------------|---------------------------|-------------------------|
| ASOS<br><b>119.975</b> | MEMPHIS CENTER<br><b>132.5 259.1</b> | GREENWOOD TOWER *<br><b>118.35 (CTAF) 0 367.6</b> | GND CON<br><b>125.55 373.4</b> | CLNC DEL<br><b>125.55</b> | UNICOM<br><b>122.95</b> |
|------------------------|--------------------------------------|---|--------------------------------|---------------------------|-------------------------|



|                    |                          |               |                         |                        |
|--------------------|--------------------------|---------------|-------------------------|------------------------|
| 2100<br>↑<br>YECUD | JOBIV<br>1.7 NM to RW 18 | EGCUP<br>2100 | ZUBUK                   | 4 NM Holding Pattern   |
| *LNAV only.        | *1 NM to RW 18           | *720          | 2100                    | 002° → 2100<br>← 182°  |
| 1 NM               | 0.7 NM                   | 4.3 NM        | 8 NM                    | GP 3.00°<br>TCH 51     |
| CATEGORY           | A                        | B             | C                       | D                      |
| LPV DA             | 471-¾                    | 326 (400-¾)   |                         |                        |
| LNAV/VNAV DA       | 566-1                    | 421 (500-1)   |                         |                        |
| LNAV MDA           | 520-¾                    | 375 (400-¾)   |                         |                        |
| CIRCLING           | 760-1                    | 598 (700-1)   | 1000-2½<br>838 (900-2½) | 1120-3<br>958 (1000-3) |