

ILS or LOC RWY 16
HAWKINS FIELD (HKS)

MISSED APPROACH:
Climb to 2000 then
climbing right turn to
3500 direct BRENZ
LOM and hold.

ALTERNATE
MISSED
APCH FIX

113.2 MHZ
R-195
Chan 79

ROMAR
MHZ 20.7

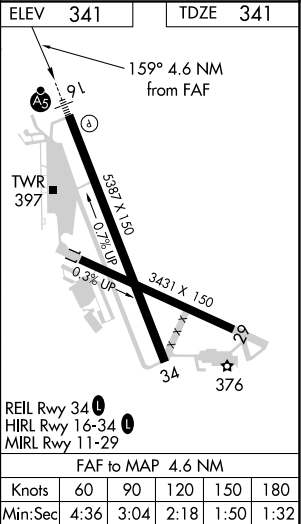
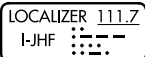
110.6 MBY
Chan 43

R-308

195°

90° 180°

Procedure NA for arrivals at JOTEK
on V9 south bound.



CATEGORY	A	B	C	D
S-ILS 16	541-½ 200 (200-½)			
S-LOC 16	840-½ 499 (500-½)		840-1 499 (500-1)	
C CIRCLING	860-1 519 (600-1)	880-1 539 (600-1)	1140-2½ 799 (800-2½)	1320-3 979 (1000-3)
UTUWI FIX MINIMUMS (DUAL VOR RECEIVERS REQUIRED)				
S-LOC 16	760-½ 419 (500-½)		760-¾ 419 (500-¾)	
C CIRCLING	860-1 519 (600-1)	880-1 539 (600-1)	1140-2½ 799 (800-2½)	1320-3 979 (1000-3)

SC-4, 31 DEC 2020 to 28 JAN 2021