

LOC/DME I-HKQ	APP CRS	Rwy Idg	9013
111.35	191°	TDZE	293
Chan 50 (Y)		Apt Elev	298

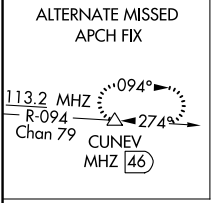
ILS or LOC RWY 19
KEY FIELD (MEI)

When local altimeter not received, use Hattiesburg-Laurel Rgnl altimeter setting and increase all DA 138 feet and all MDA 140 feet, increase S-ILS 19 all Cats visibility to RVR 6000, S-LOC 19 Cats C, D, and E visibility to 2 miles, and Circling Cats A/D visibility ¼ mile and Cat C visibility ½ mile; increase HOLUN Fix minimums S-LOC Cats C, D and E to 1½ mile, and Circling Cat C visibility ½ mile, and Cat D visibility ¼ mile. For inop MALS, increase S-ILS 19 all Cats visibility to RVR 6000, and S-LOC 19 Cat E to 2 miles; increase HOLUN fix minimums S-LOC 19 Cat E visibility to 1½ mile. For inop MALS when using Hattiesburg-Laurel Rgnl altimeter setting, increase S-ILS 19 all Cats visibility to 1½ mile, and S-LOC 19 Cat E to 2½ miles; increase HOLUN Fix minimums S-LOC 19 Cat E visibility to 1¾ mile. Helicopter visibility reduction below RVR 4000 NA. Night landing: Rwy 22 NA. Circling NA southeast of Rwy 1 and 22. VDP NA when using Hattiesburg-Laurel Rgnl altimeter setting.

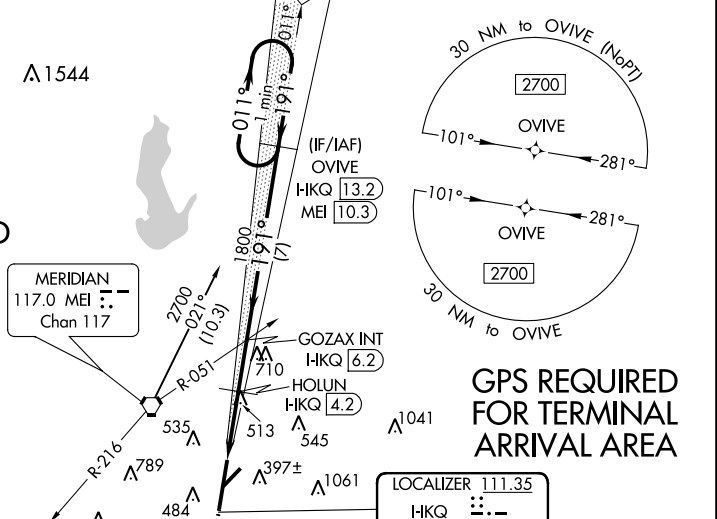
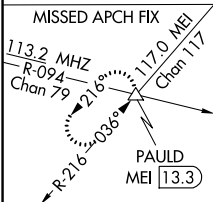


MISSED APPROACH:
Climb to 1000 then climbing right turn to 3000 on heading 250° and MEI VORTAC R-216 to PAULD INT/MEI 13.3 DME and hold.

ATIS	MERIDIAN APP CON ★	KEY TOWER ★	GND CON	CLNC DEL	UNICOM
126.475 291.675	120.5 269.325	133.975 (CTAF) 0 257.8	121.9 348.6	121.9 348.6	122.95

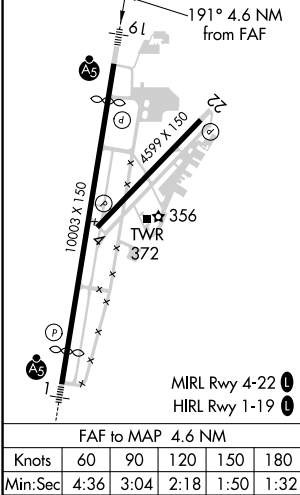


DME REQUIRED



GPS REQUIRED FOR TERMINAL ARRIVAL AREA

ELEV 298	TDZE 293
----------	----------



1000 ↑	3000 hdg 250°	MEI R-216	PAULD △	VGSI and ILS glidepath not coincident (VGSI Angle 3.00/TCH 69). #1180 when using Hattiesburg-Laurel Rgnl altimeter setting.		
*LOC only.						
<p>GOZAX INT OVIVE One Minute Holding Pattern 011° 191° 1800 1800 GS 3.00° TCH 54</p>						
CATEGORY	A		B	C	D	E
S-ILS 19	633/40 340 (400-¾)					
S-LOC 19	1040/40	747 (800-¾)	1040-1¾		747 (800-1¾)	
CIRCLING	1040-1	1040-1¼	1040-2¼	1120-2¾	1120-3	
	742 (800-1)	742 (800-1¼)	742 (800-2¼)	822 (900-2¾)	822 (900-3)	
HOLUN FIX MINIMUMS						
S-LOC 19	780/40	487 (500-¾)		780/50		487 (500-1)
CIRCLING	860-1	880-1		960-1¾	1120-2¾	1120-3
	562 (600-1)	582 (600-1)		662 (700-1¾)	822 (900-2¾)	822 (900-3)

SC-4, 31 DEC 2020 to 28 JAN 2021

SC-4, 31 DEC 2020 to 28 JAN 2021