

WAAS CH 42533 W04A	APP CRS 046°	Rwy Idg TDZE 295 Apt Elev 298
--	------------------------	---

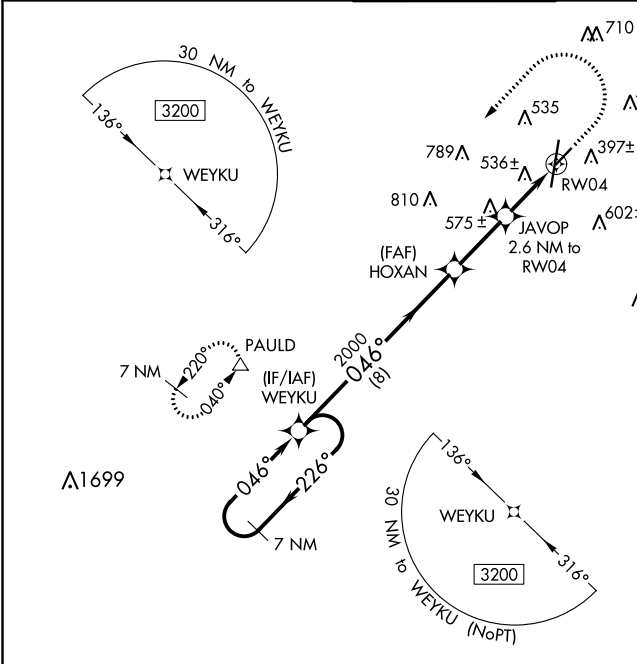
RNAV (GPS) RWY 4

KEY FIELD (MEI)

⚠ For uncompensated Baro-VNAV systems, LNAV/VNAV NA below -8°C (18°F) or above 54°C (130°F). Circling NA southeast of Rwy 1 and 22. DME/DME RNP-0.3 NA. When local altimeter setting not received, use Hattiesburg-Laurel Rgnl altimeter setting and increase all DA 138 feet and all MDA 140 feet; increase LPV and LNAV/VNAV all Cats visibilities ½ mile, LNAV Cats C/D visibility ½ mile, and Circling Cat C visibility ½ mile and Cat D visibility ¼ mile. Helicopter visibility reduction below ¾ SM NA. Baro-VNAV and VDP NA with Hattiesburg-Laurel Rgnl altimeter setting. Night landing: Rwy 22 NA.

MISSED APPROACH:
Climb to 1300 then climbing left turn to 3000 direct PAULD and hold.

ATIS 126.475 291.675	MERIDIAN APP CON ★ 120.5 269.325	KEY TOWER ★ 133.975 (CTAF) 0 257.8	GND CON 121.9 348.6	CLNC DEL 121.9 348.6	UNICOM 122.95
--------------------------------	--	--	-------------------------------	--------------------------------	-------------------------



VGSI and RNAV glidepath not coincident (VGSI Angle 3.13/TCH 19).				
7 NM Holding Pattern				
3200 ← 226° → 046° →				
GP 3.00° TCH 45				
WEYKU				
HOXAN				
JAVOP 2.6 NM to RW04				
*1.4 NM to RW04				
RW04				
*LNAV only.				
8 NM → 2.6 NM → 1.2 NM → 1.4 NM →				
CATEGORY	A	B	C	D
LPV DA	576-7⁄8 281 (300-7⁄8)			
LNAV/VNAV DA	849-1⁄8 554 (600-1⁄8)			
LNAV MDA	800-1 505 (600-1) 800-13⁄8 505 (600-13⁄8)			
CIRCLING	860-1 562 (600-1)	880-1 582 (600-1)	960-13⁄4 662 (700-13⁄4)	1120-23⁄4 822 (900-23⁄4)

