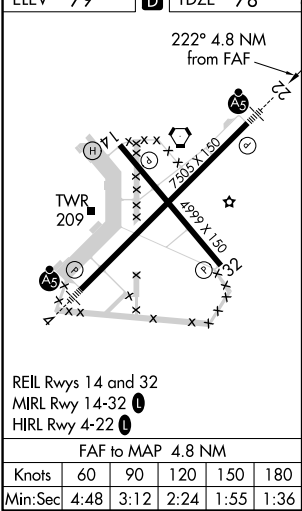
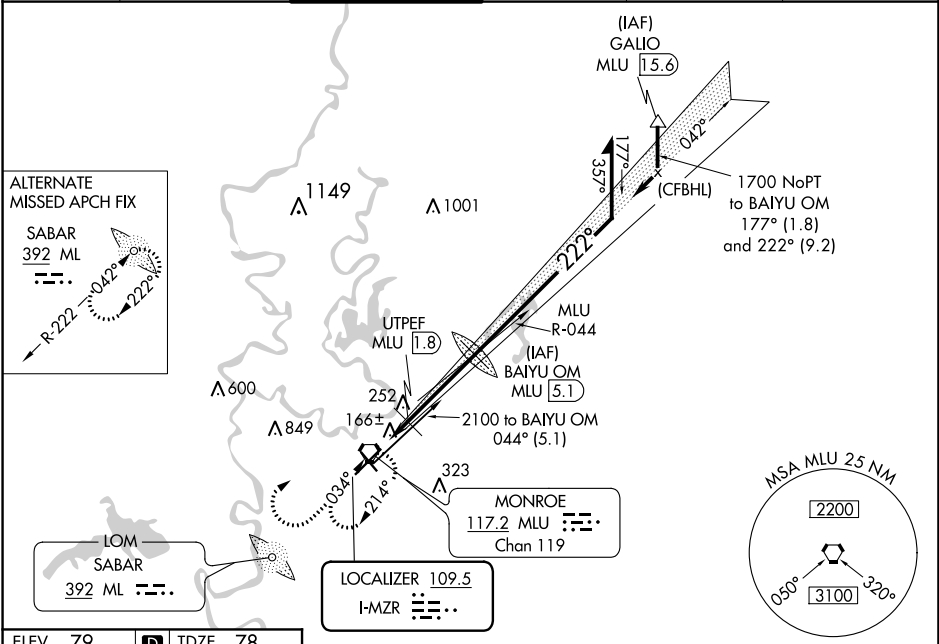


LOC I-MZR 109.5	APP CRS 222°	Rwy Idg 7505 TDZE 78 Apt Elev 79
---------------------------	------------------------	---

ILS or LOC RWY 22
MONROE RGNL (MLU)

DME or RADAR required for procedure entry.		MALSR 	MISSED APPROACH: Climb to 1800 then climbing right turn to 3000 direct MLU VORTAC and hold.		
 Circling Rwy 14 NA at night. # DME from MLU VORTAC.					
ATIS 125.05	MONROE APP CON ★ 118.15 290.475	MONROE TOWER ★ 118.9 (CTAF) 257.8	GND CON 121.9	CLNC DEL 121.65	UNICOM 122.95



1800	3000	MLU				
↑	↷	⬡				
*LOC only.			Remain within 10 NM			
UTPEF MLU 1.8			1676	042°	2100	
*560			1700	222°	GS 3.00° TCH 54	
1.4			3.4 NM			
CATEGORY	A		B		C	D
S-ILS 22	278-½ 200 (200-½)					
S-LOC 22	560-½	482 (500-½)	560-1		482 (500-1)	
CIRCLING	580-1	501 (600-1)	620-1½ 541 (600-½)		640-2 561 (600-2)	
# UTEPF FIX MINIMUMS						
S-LOC 22	420-½	342 (400-½)	420-⅝		342 (400-⅝)	
CIRCLING	580-1	501 (600-1)	620-1½ 541 (600-½)		640-2 561 (600-2)	

SC-4, 31 DEC 2020 to 28 JAN 2021

SC-4, 31 DEC 2020 to 28 JAN 2021