

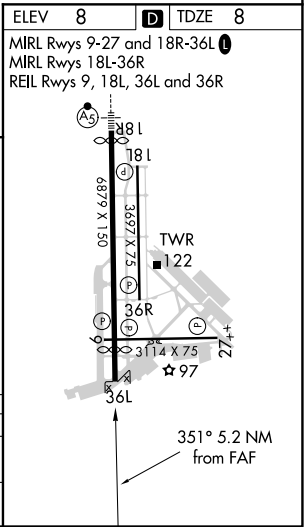
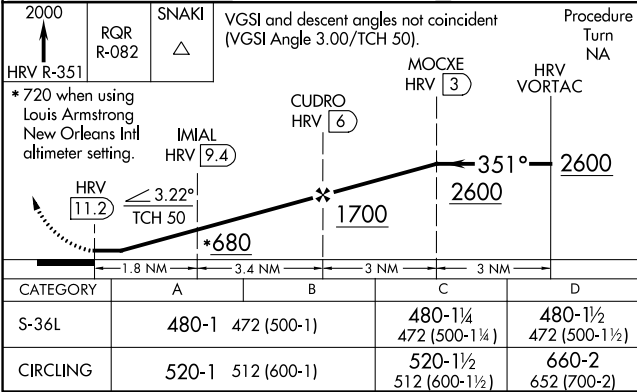
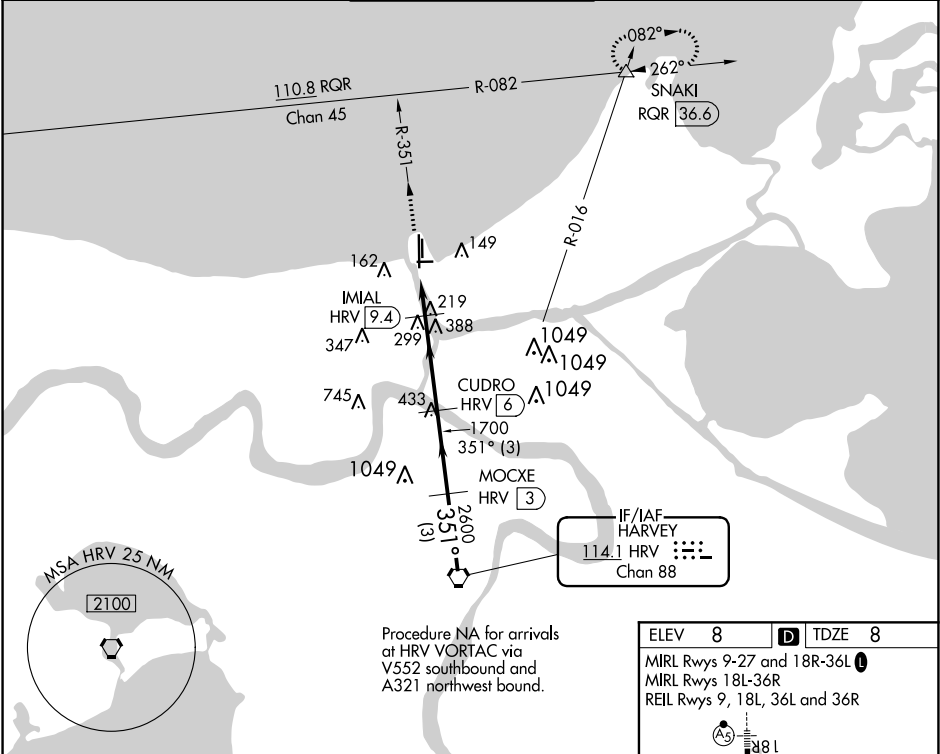
VORTAC	HRV	Rwy Idg	5135
114.1	APP CRS	TDZE	8
Chan 88	351°	Apt Elev	8

VOR/DME RWY 36L  
LAKEFRONT (NEW)

Visibility reduction by helicopters NA.  
When local altimeter setting not received, use Louis Armstrong New Orleans Intl altimeter setting and increase all MDA 40 feet and increase S-36L Cat C/D and Circling Cat D visibilities ¼ mile.

MISSED APPROACH: Climb to 2000 via HRV R-351 and RQR R-082 to SNAKI INT/RQR 36.6 DME and hold.

ATIS 124.9	NEW ORLEANS APP CON NORTH 133.15 290.3 SOUTH 123.85 256.9	LAKEFRONT TOWER ★ 119.9 (CTAF)	GND CON 121.7	CLNC DEL 127.4
---------------	---	-----------------------------------	------------------	-------------------



SC-4, 31 DEC 2020 to 28 JAN 2021

SC-4, 31 DEC 2020 to 28 JAN 2021