
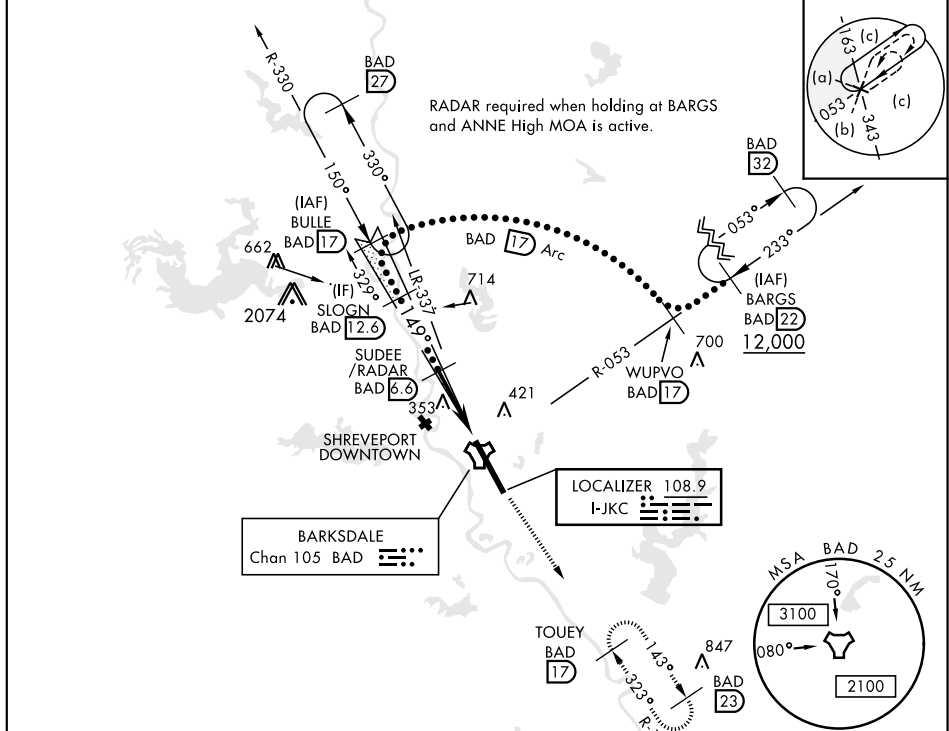


|  |  |  |   |  |  |
|--|--|--|---|--|--|
| LOC I-JKC<br><u>108.9</u>  | APCH CRS<br><b>149°</b>  | Rwy Idg <b>11,758</b><br>THRE <b>163</b><br>Arpt Elev <b>165</b> | JAL-391 [USAF]  | BARKSDALE AFB (KBAD)   |  |
| * When ALS inop, increase CAT CDE RVR to 40 and vis to ¾ mile.<br>** When ALS inop, increase CAT CDE vis to 1¾ miles.<br>*** Circling not authorized W of Rwy. |  |  | ALSF-1<br> | MISSED APPROACH: Climb to 3000<br>via BAD R-143 direct TOUEY and hold. |  |
| ATIS<br><b>307.025</b>   | SHREVEPORT APP CON<br>320°-152° <b>123.75 360.725</b><br>153°-319° <b>119.9 335.55</b> |  | BARKSDALE TOWER<br><b>128.25 278.3</b>  |  | GND CON<br><b>121.8 253.5</b><br><br>ASR |



RADAR or DME REQUIRED

EMERG SAFE ALT 100 NM 3300

