
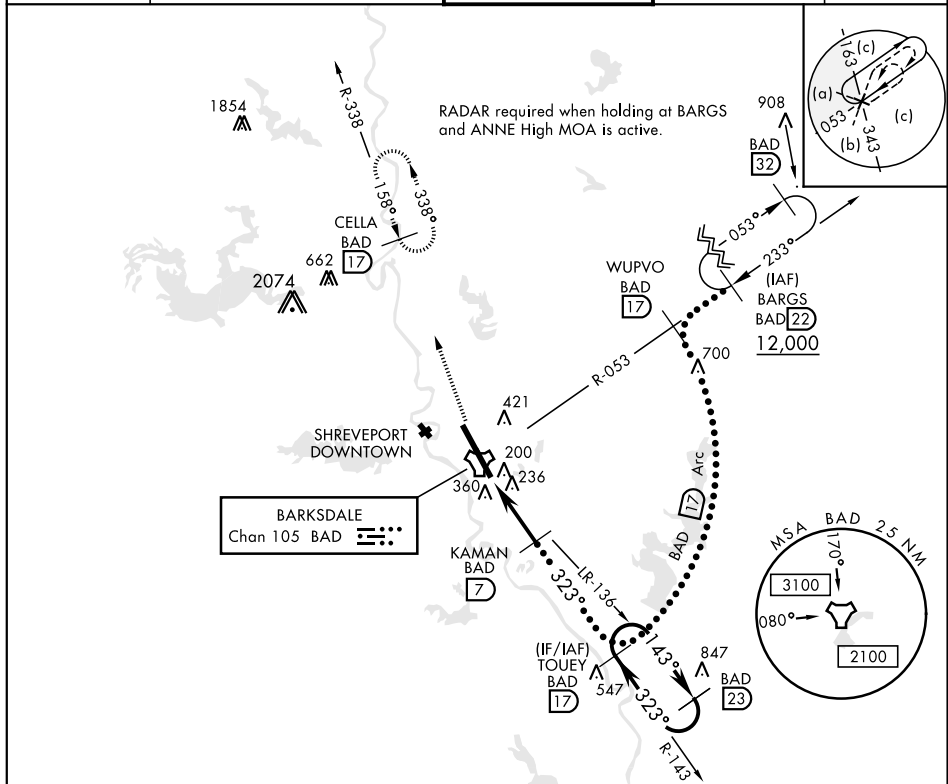
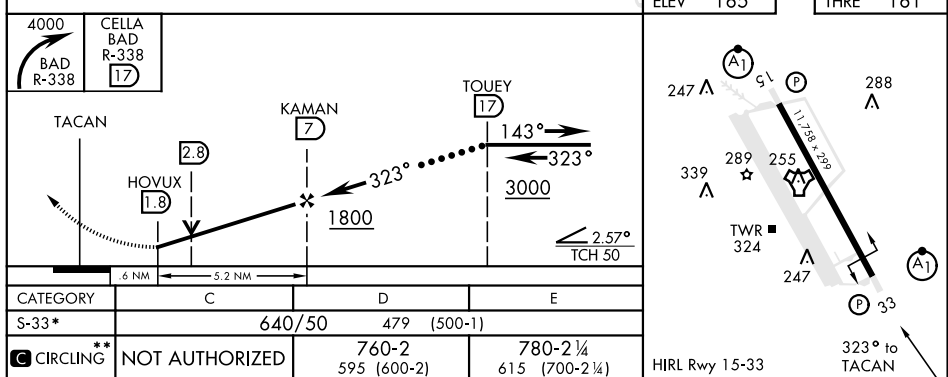


HI-TACAN Z RWY 33

TACAN BAD Chan 105	APCH CRS 323°	Rwy Idg 11,758 THRE Arpt Elev 161 165	JAL-391 [USAF]	BARKSDALE AFB (KBAD)	
* When ALS inop, increase CAT CDE vis to 1½ miles. ** Circling not authorized W of Rwy.			ALSF-1 	MISSED APPROACH: Climb to 4000 via BAD R-338 direct CELLA and hold.	
ATIS 307.025	SHREVEPORT APP CON 320°-152° 123.75 360.725 153°-319° 119.9 335.55		BARKSDALE TOWER 128.25 278.3		GND CON 121.8 253.5
			ASR		



EMERG SAFE ALT 100 NM 3300



BOSSIER CITY, LOUISIANA

32°30'N-93°40'W

BARKSDALE AFB (KBAD)

HI-TACAN Z RWY 33

Amdt 7 25JUN15

SC-4, 31 DEC 2020 to 28 JAN 2021