
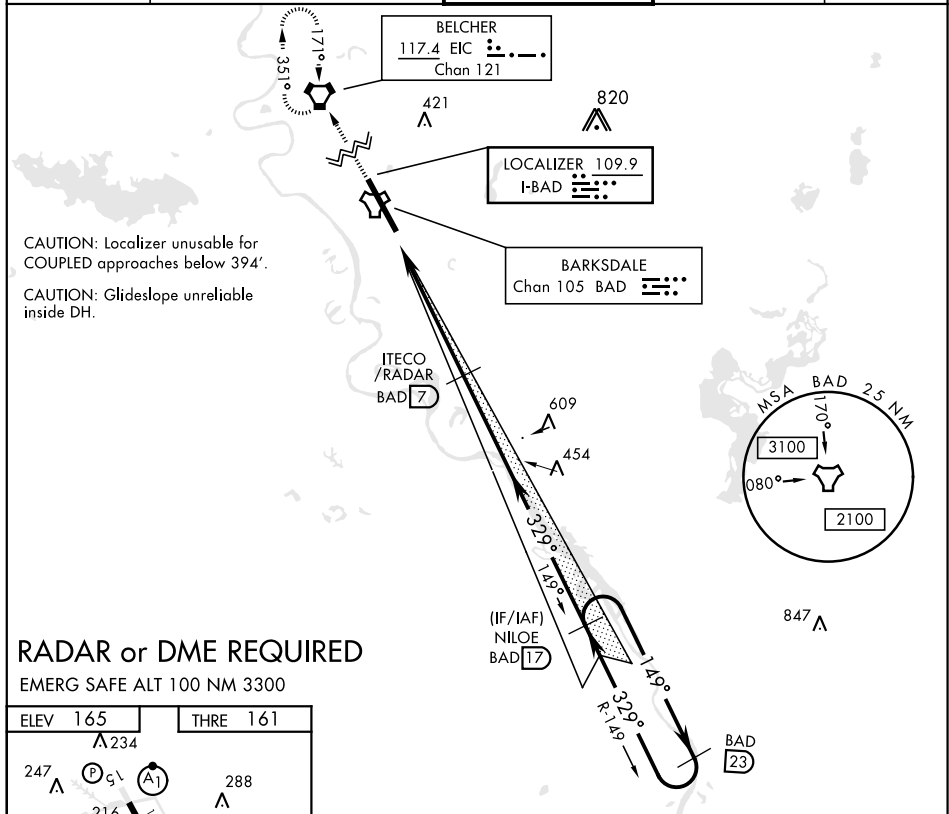


ILS or LOC W RWY 33

LOC I-BAD 109.9	APCH CRS 329°	Rwy Idg 11.758 THRE 161 Arpt Elev 165	AL-391 [USAF]	BARKSDALE AFB (KBAD)		
* When ALS inop, increase RVR to 40 and vis to ¾ mile. ** When ALS inop, increase CAT AB RVR to 55 and vis to 1 mile, CAT CDE RVR to 60 and vis to 1 ½ miles. *** Circling not authorized W of Rwy.			ALSF-1 	MISSED APPROACH: Climb to 3100 direct EIC VORTAC and hold.		
ATIS 307.025	SHREVEPORT APP CON 320°-152° 123.75 360.725 153°-319° 119.9 335.55		BARKSDALE TOWER 128.25 278.3		GND CON 121.8 253.5	ASR



RADAR or DME REQUIRED


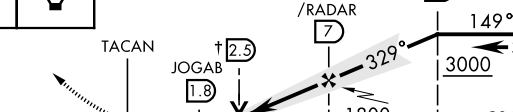
EMERG SAFE ALT 100 NM 3300

ELEV	165	THRE	161
------	-----	------	-----

Diagram illustrating the runway layout and associated data:

- Runway 329: 5.8 NM from FAF
- Runway 234
- Runway 288
- Runway 339
- Runway 304
- TWR (Tower) 324
- HIRL Rwy 15-33

FAF to MAP 5.2 NM					
Knots	60	90	120	150	180
Min:Sec	5:12	3:28	2:36	2:05	1:44

<div style="display: flex; justify-content: space-between; align-items: center;"> <div style="display: flex; gap: 10px;"> <div style="border: 1px solid black; padding: 5px; text-align: center;">3100 ↑</div> <div style="border: 1px solid black; padding: 5px; text-align: center;">EIC </div> </div> <div style="text-align: center;">† LOC ONLY</div> <div style="text-align: right;">NILEO 17</div> </div>				
				
<div style="display: flex; justify-content: space-around; align-items: center;"> <div style="text-align: center;">A 6 NM</div> <div style="text-align: center;">B 5.2 NM</div> <div style="text-align: center;">C</div> <div style="text-align: center;">D</div> <div style="text-align: center;">E</div> </div>				
CATEGORY				
S-ILS 33 *	361/24 200 (200-½)			
S-LOC 33 **	560/24 399 (400-½)		560/35 399 (400-¾)	
*** C CIRCLING	NOT AUTHORIZED		760-2 595 (600-2)	780-2 ¼ 615 (700-2 ¼)