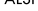
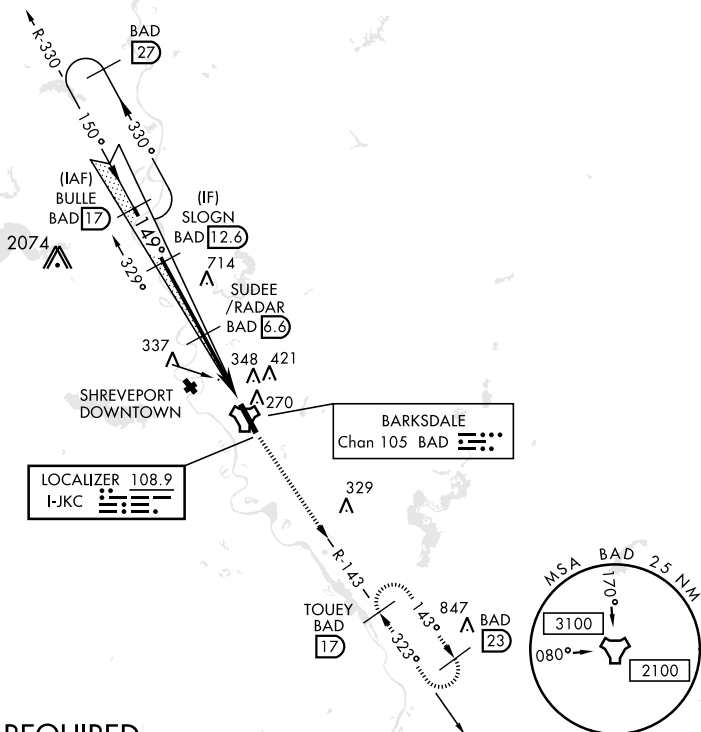


## ILS or LOC Z RWY 15

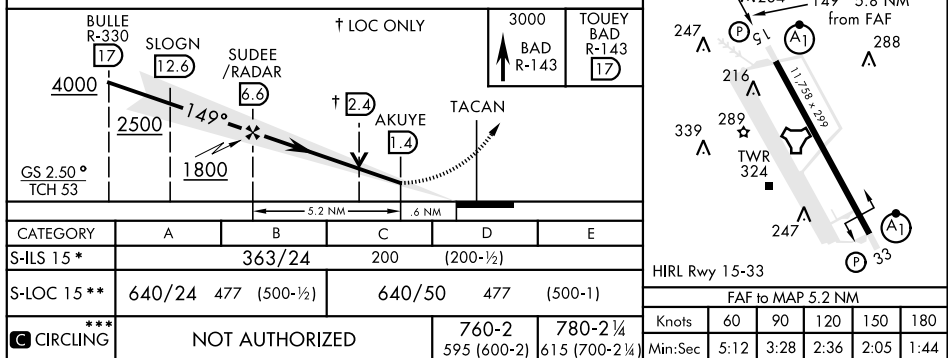
LOC I-JKC <b>108.9</b>	APCH CRS <b>149°</b>	Rwy Idg <b>11,758</b> THRE <b>163</b> Arprt Elev <b>165</b>	AL-391 [USAF]	BARKSDALE AFB (KBAD)		
* When ALS inop, increase RVR to 40 and vis to ¾ mile. ** When ALS inop, increase CAT AB RVR to 55 and vis to 1 mile, CAT CDE vis to 1½ miles.			ALSF-1 	MISSED APPROACH: Climb to 3000 via BAD R-143 direct TOUEY and hold.		
ATIS <b>307.025</b>	SHREVEPORT APP CON 320°-152° <b>123.75 360.725</b> 153°-319° <b>119.9 335.55</b>		BARKSDALE TOWER <b>128.25 278.3</b>		GND CON <b>121.8 253.5</b>	ASR

\*\*\* Circling not authorized W of Rwy.



RADAR or DME REQUIRED

EMERG SAFE ALT 100 NM 3300



BOSSIER CITY, LOUISIANA

32°30'N-93°40'W

BARKSDALE AFB (KBAD)

Amdt 6 25JUN15

ILS or LOC Z RWY 15

SC-4, 31 DEC 2020 to 28 JAN 2021

SC-4, 31 DEC 2020 to 28 JAN 2021