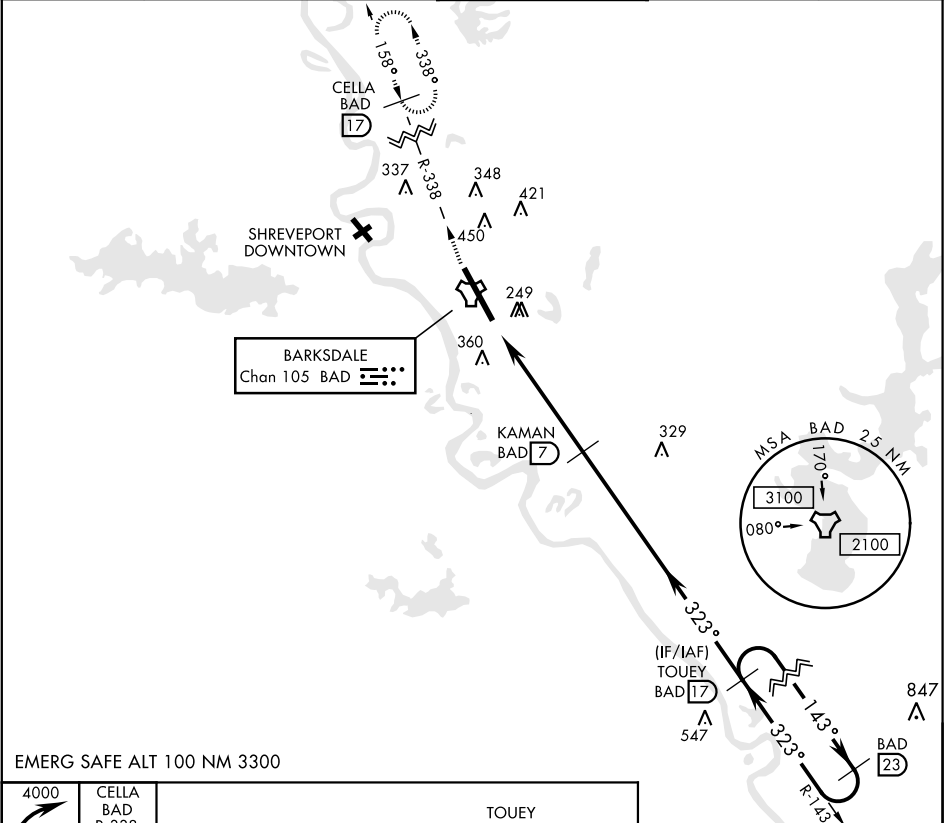
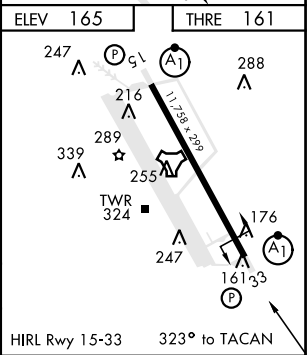
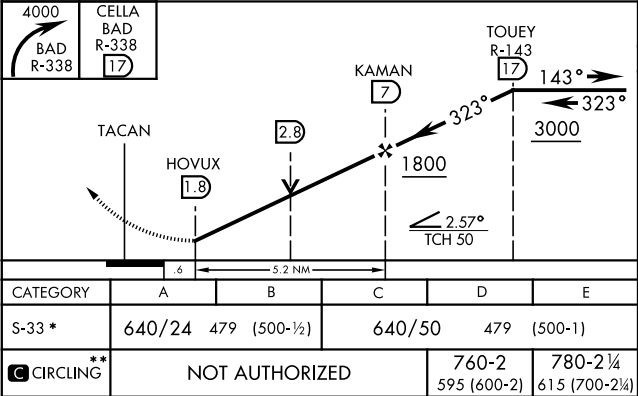


TACAN Y RWY 33

TACAN BAD Chan 105	APCH CRS 323°	Rwy ldg 11,758 THRE 161 Arprt Elev 165	AL-391 [USAF]	BARKSDALE AFB (KBAD)
* When ALS inop, increase CAT AB RVR to 55 and vis to 1 mile, CAT CDE vis to 1 3⁄8 miles. ** Circling not authorized W of Rwy.			ALSF-1 A1	MISSED APPROACH: Climb to 4000 via BAD R-338 direct CELLA and hold.
ATIS 307.025	SHREVEPORT APP CON 320°-152° 123.75 360.725 153°-319° 119.9 335.55	BARKSDALE TOWER 128.25 278.3	GND CON 121.8 253.5	ASR



EMERG SAFE ALT 100 NM 3300



TACAN Y RWY 33

SC-4, 31 DEC 2020 to 28 JAN 2021

SC-4, 31 DEC 2020 to 28 JAN 2021