

|                        |                             |   |
|------------------------|-----------------------------|---|
| APP CRS<br><b>234°</b> | Rwy Idg<br>TDZE<br>Apt Elev | <b>4200</b><br><b>178</b><br><b>179</b> |
|------------------------|-----------------------------|---|

# RNAV (GPS) RWY 23

## SHREVEPORT DOWNTOWN (DTN)

RNP APCH.

**T** Circling Rwy 23, 32 NA at night. Rwy 23 helicopter visibility  
**A** reduction below 1 SM NA. Straight-in minimums NA at night.

**MISSED APPROACH:** Climbing right turn to 3100 direct ZOROD and hold.

|         |  |                      |         |          |                            |        |
|---------|--|----------------------|---------|----------|----------------------------|--------|
| ASOS    | SHREVEPORT APP CON                                     | DOWNTOWN TOWER ★     | GND CON | CLNC DEL | CLNC DEL                   | UNICOM |
| 118.525 | 119.9 335.55 (153°-319°)<br>123.75 360.725 (320°-152°) | 120.225 (CTAF) 284.6 | 121.65  | 121.65   | 119.9<br>(When twr closed) | 122.95 |

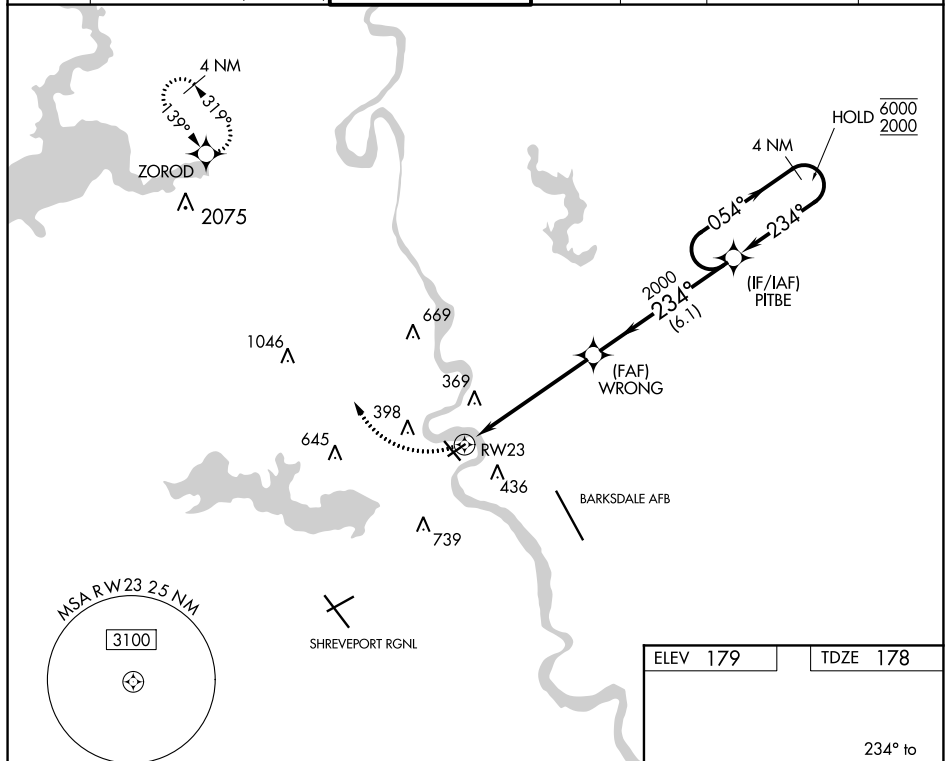


Diagram illustrating a 4 NM Holding Pattern for RW23. The pattern is defined by a series of turns: a 234° turn to the left, followed by a 054° turn to the right, and then another 234° turn to the left. The pattern is centered on the 2000 ft altitude. The distance between the start of the pattern and the RW23 threshold is 5.6 NM. The distance between the end of the pattern and the RW23 threshold is 6.1 NM. The pattern is labeled 'WRONG' and 'PITBE'. The diagram also shows a '4 NM Holding Pattern' and a '3100 ZOROD' symbol.

