

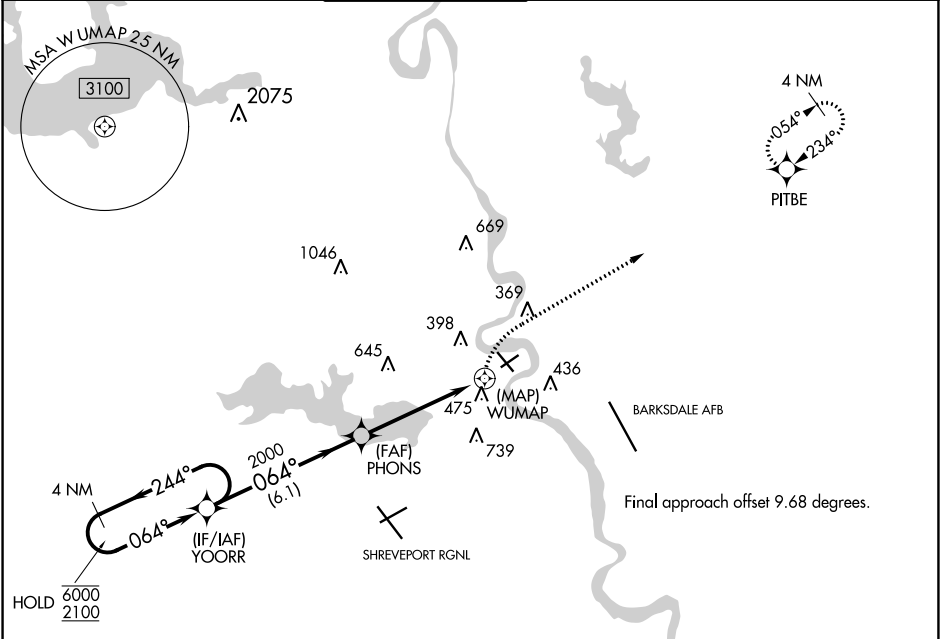
APP CRS	Rwy Idg	4200
064°	TDZE	178
	Apt Elev	179

RNAV (GPS) RWY 5
SHREVEPORT DOWNTOWN (DTN)

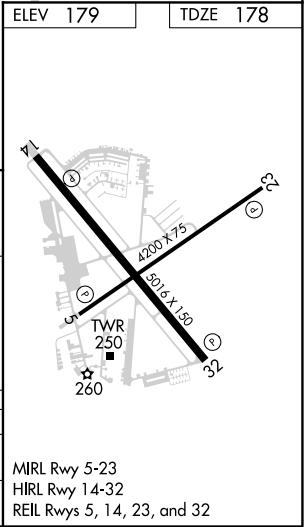
RNP APCH.
<div><div></div><div></div></div> Circling Rwy 23, 32 NA at night. Rwy 5 helicopter visibility reduction below 1 SM NA. Straight-in minimums NA at night.

MISSED APPROACH: Climbing left turn to 2000 direct PITBE and hold.

ASOS	SHREVEPORT APP CON	DOWNTOWN TOWER *	GND CON	CLNC DEL	CLNC DEL	UNICOM
118.525	119.9 335.55 (153°-319°) 123.75 360.725 (320°-152°)	120.225 (CTAF) 284.6	121.65	121.65	119.9 (When twr closed)	122.95



4 NM Holding Pattern				2000	PITBE
<div><div>6000</div><div>2100</div><div>← 244°</div><div>064° →</div></div>				PHONS	WUMAP
YOORR				2000	RW05
				3.00°	TCH 42
				6.1 NM	4.9 NM
CATEGORY	A	B	C	D	
LNAV MDA	720-1	542 (600-1)	NA		
CIRCLING	800-1 621 (700-1)	880-1 701 (800-1)	NA		



SC-4, 31 DEC 2020 to 28 JAN 2021

SC-4, 31 DEC 2020 to 28 JAN 2021