


WAAS CH 97411 W18A	APP CRS 177°	Rwy Idg 7981 TDZE 129 Apt Elev 131
--	------------------------	---

RNAV (GPS) RWY 18L
GREENVILLE MID-DELTA (GLH)

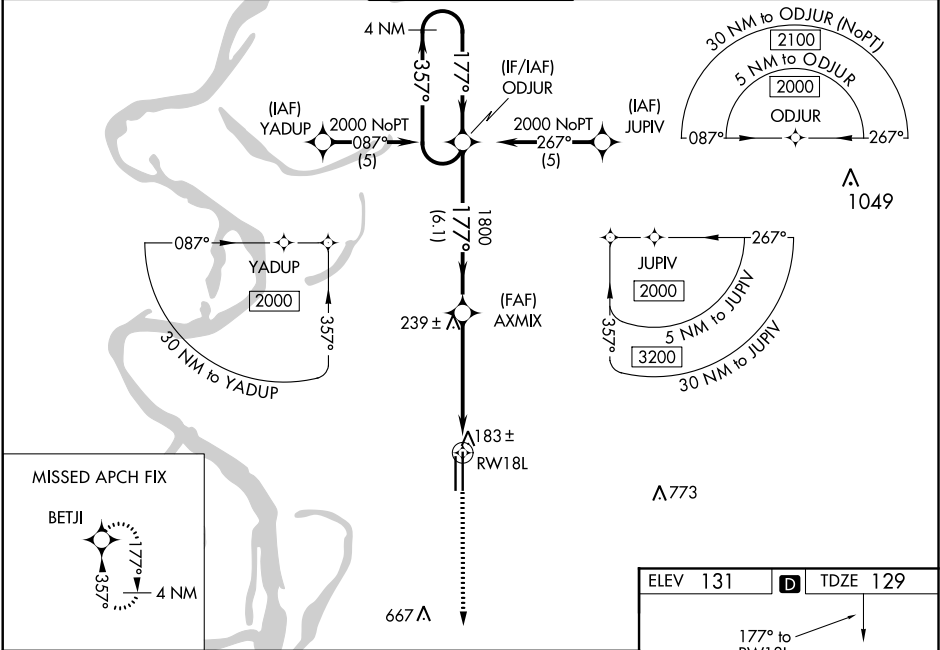
⚠ For uncompensated Baro-VNAV systems, LNAV/VNAV NA below -15°C (5°F) or above 54°C (130°F). Inop table does not apply to LNAV Cat D. DME/DME RNP-0.3 NA. When local altimeter setting not received, use Greenwood altimeter setting and increase LPV DA to 437, LNAV/VNAV DA to 547, increase all MDA 120 feet, increase LNAV/VNAV Cats A, B, and C visibility ½ mile, Cat D visibility ¼ mile, increase LNAV Cat C visibility ¼ mile, and increase Circling Cat D visibility ¼ mile. VDP and Baro-VNAV NA when using Greenwood altimeter setting. For inop MALS, increase LNAV/VNAV visibility all Cats to RVR 5000. For inop MALS when using Greenwood altimeter setting, increase LPV visibility all Cats to RVR 5000.

MALS

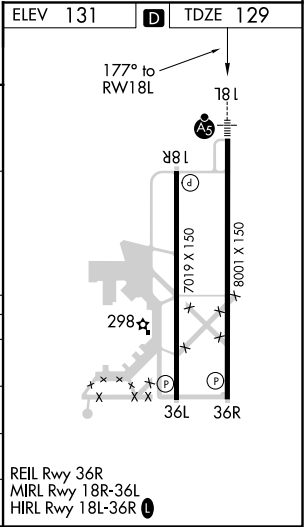


MISSED APPROACH:
Climb to 2000 direct
BETJI and hold.

ASOS 125.525	MEMPHIS CENTER 135.875 269.35	GREENVILLE TOWER* 119.0 (CTAF) 0 256.9	GND CON 121.8 256.9	UNICOM 122.95
------------------------	---	--	-------------------------------	-------------------------



4 NM Holding Pattern		ODJUR		2000		BETJI	
2000		← 357° → 177°		AXMIX 1800		* 0.9 NM to RW18L * LNAV only.	
GP 3.00° TCH 53		1800		1800		RW18L	
		6.1 NM		4.1 NM		0.9 NM	
CATEGORY	A	B	C	D			
LPV DA	329/24 200 (200-½)						
LNAV/VNAV DA	439/24 310 (400-½)					439/40 310 (400-¾)	
LNAV MDA	460/24 331 (400-½)					460/50 331 (400-1)	
CIRCLING	600-1 469 (500-1)			600-1½ 469 (500-1½)		700-2 569 (600-2)	



SC-4, 31 DEC 2020 to 28 JAN 2021

SC-4, 31 DEC 2020 to 28 JAN 2021