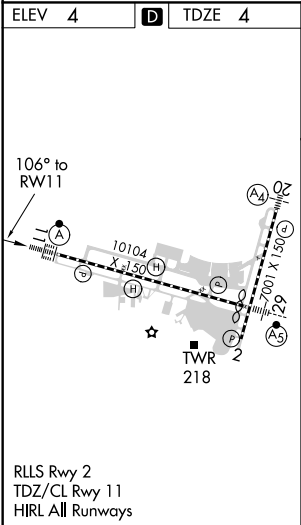
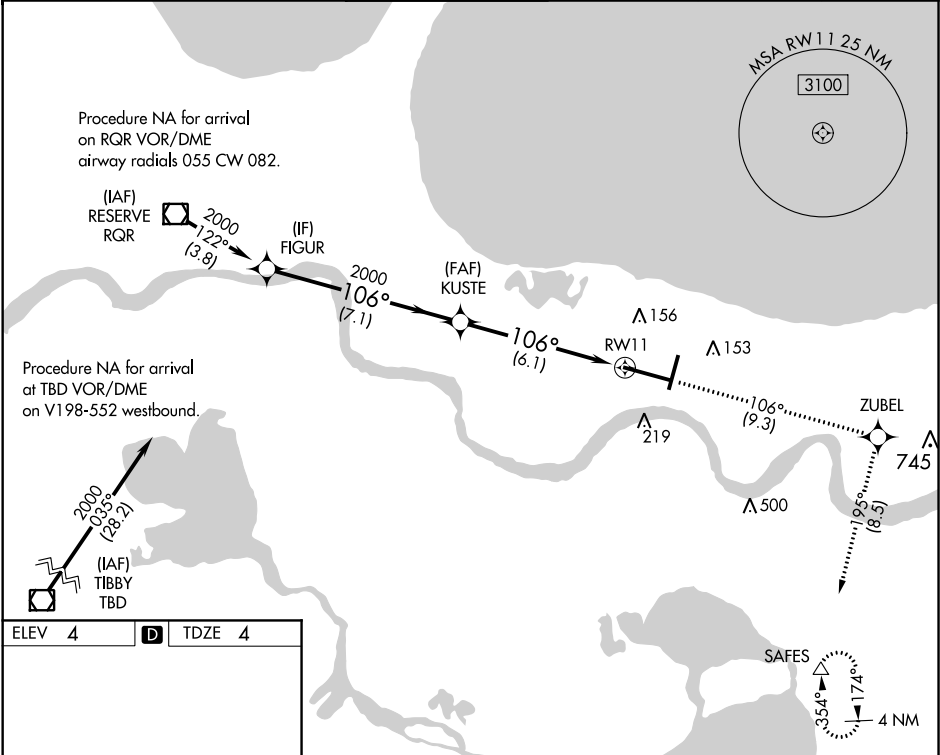


APP CRS	Rwy Idg	9800
106°	TDZE	4
	Apt Elev	4

RNAV (RNP) Z RWY 11

LOUIS ARMSTRONG NEW ORLEANS INTL (MSY)

For uncompensated Baro-VNAV systems, procedure NA below -1°C (31°F) or above 54°C (130°F). GPS required. For inop ALSF-2, increase RNP 0.30 all Cats visibility to RVR 6000.		ALSF-2	MISSED APPROACH: Climb to 2000 on track 106° to ZUBEL and on track 195° to SAFES and hold.	
D-ATIS	NEW ORLEANS APP CON	NEW ORLEANS TOWER	GND CON	CLNC DEL
127.55	WEST 125.5 350.35 EAST 133.15 290.3	119.5 254.3	121.9 273.525	126.575
CPDLC				



		<div>2000 ↑</div>		<div>tr 106°</div>		<div>ZUBEL ✦</div>		<div>tr 195°</div>		<div>SAFES △</div>	
FIGUR		KUSTE									
2000		2000									
106°		2000									
GP 3.00° TCH 55		RW11									
		7.1 NM				6.1 NM					
CATEGORY	A		B		C		D				
RNP 0.14 DA			304/24		300 (300-½)						
RNP 0.30 DA			367/40		363 (400-¾)						
AUTHORIZATION REQUIRED											