

APP CRS  
197°

Rwy Idg  
7001

TDZE  
-1

Apt Elev  
4

RNAV (RNP) Z RWY 20

LOUIS ARMSTRONG NEW ORLEANS INTL (MSY)

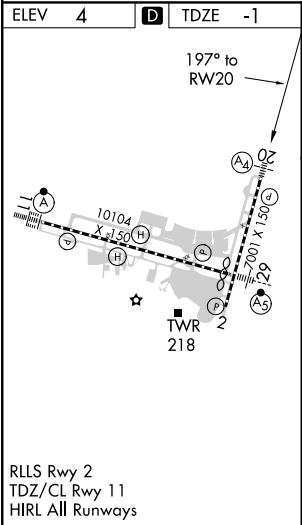
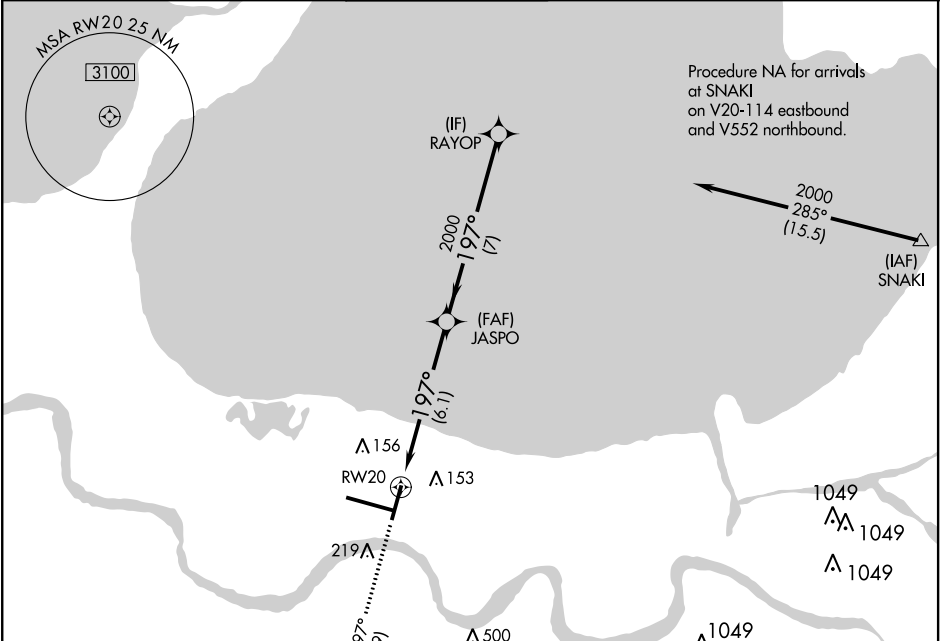
▼

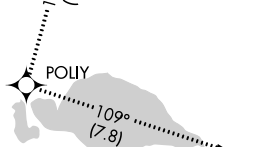
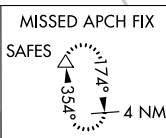

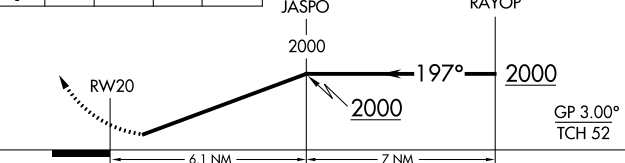
For uncompensated Baro-VNAV systems, procedure NA below -1°C (31°F) or above 54°C (130°F). GPS required. For inop MALS, increase RNP 0.11 all Cats visibility to 1¼ mile, increase RNP 0.30 Cat D visibility to 1½ mile.

MALS

MISSED APPROACH: Climb to 2000 on track 197° to POLY and track 109° to SAFES and hold.

D-ATIS 127.55	NEW ORLEANS APP CON WEST 125.5 350.35 EAST 133.15 290.3	NEW ORLEANS TOWER 119.5 254.3	GND CON 121.9 273.525	CLNC DEL 126.575	CPDLC
------------------	---	----------------------------------	--------------------------	---------------------	-------



						
2000 ↑	tr 197°	POLIY 	tr 109°	SAFES △		
					RAYOP	
					2000	
					GP 3.00° TCH 52	
CATEGORY		A	B	C	D	
RNP 0.11 DA		363/45		364 (400-7%)		
RNP 0.30 DA		414/60		415 (500-1¼)		
AUTHORIZATION REQUIRED						