

NEW ORLEANS, LOUISIANA

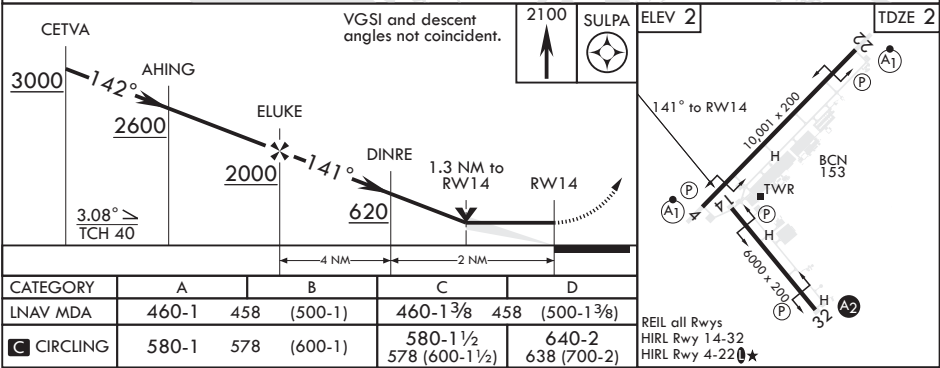
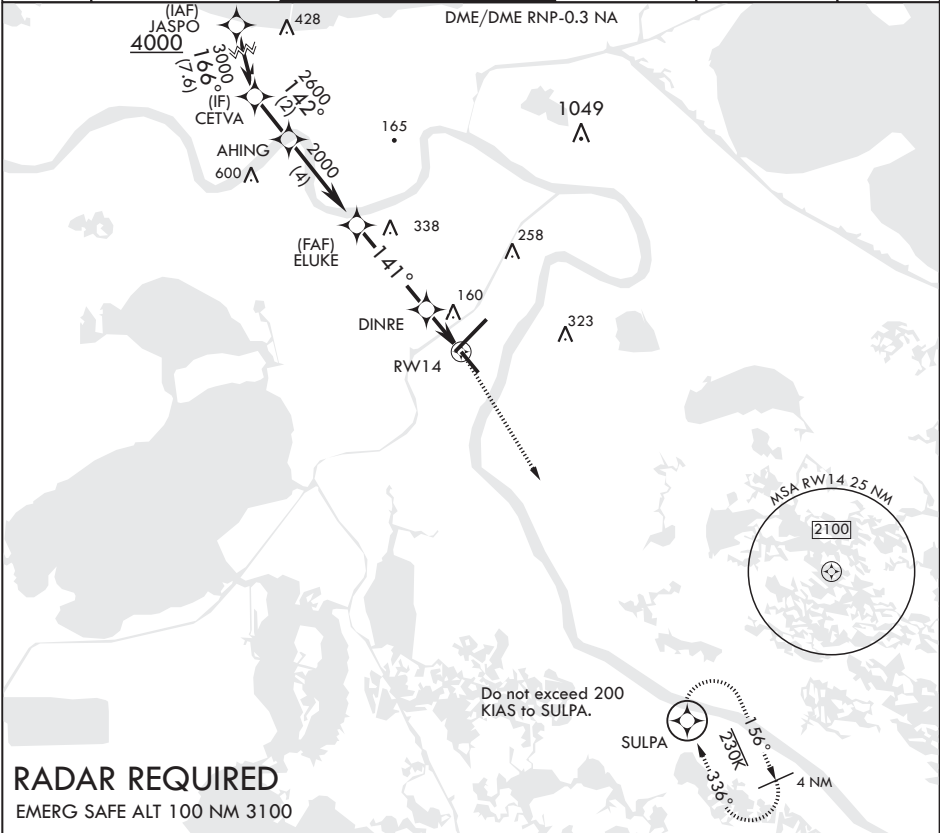
RNAV (GPS) RWY 14

APCH CRS	Rwy Idg	6000
141°	TDZE	2
	Arpt Elev	2

AL-630 (USN)
NEW ORLEANS NAS JRB (ALVIN CALLENDER FLD) (KNBG)

		MISSED APPROACH: Climb to 2100 direct SULPA and hold.			
--	--	---	--	--	--

ATIS★	APP CON/DEP CON	NAVY NEW ORLEANS TOWER★	GND CON	CLNC DEL	ASR/PAR
279.55	123.85 256.9	123.8 0★ 340.2 (CTAF)	121.6 270.35	128.35 263.0	



NEW ORLEANS, LOUISIANA

29°50'N - 90°02'W NEW ORLEANS NAS JRB (ALVIN CALLENDER FLD) (KNBG)

Amdt 1 13SEP18

RNAV (GPS) RWY 14

SC-4, 31 DEC 2020 to 28 JAN 2021

SC-4, 31 DEC 2020 to 28 JAN 2021