

NEW ORLEANS, LOUISIANA

RNAV (GPS) RWY 22

AL-630 (USN)

NEW ORLEANS NAS JRB (ALVIN CALLENDER FLD) (KNBG)

WAAS CH 60141 W22A	APCH CRS 224°	Rwy Idg 10,001 TDZE -1 Arpt Elev 2
--	-------------------------	---

T * When ALS inop, increase vis CAT ABCD to 3/4 mile.
 ** When ALS inop, increase vis CAT ABCD to 1 3/4 miles.
 *** When ALS inop, increase vis CAT AB to 1 mile, CAT CD to 1 3/8 miles.

ALSF-1

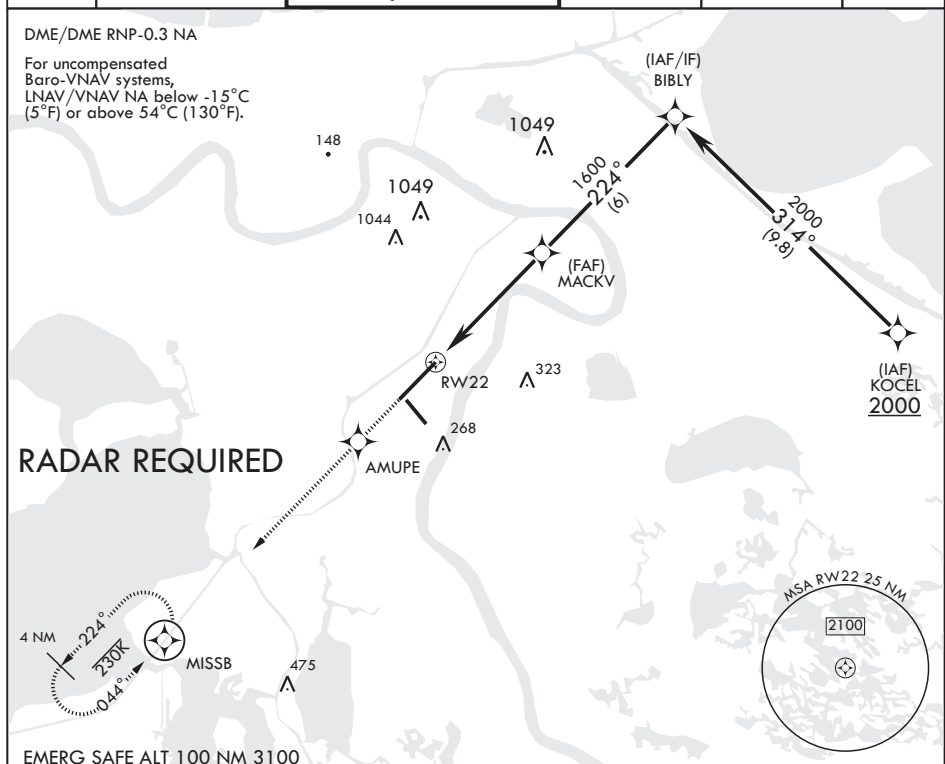


MISSED APPROACH: Climb to 2000
direct AMUPE track 224° to MISSB
and hold.

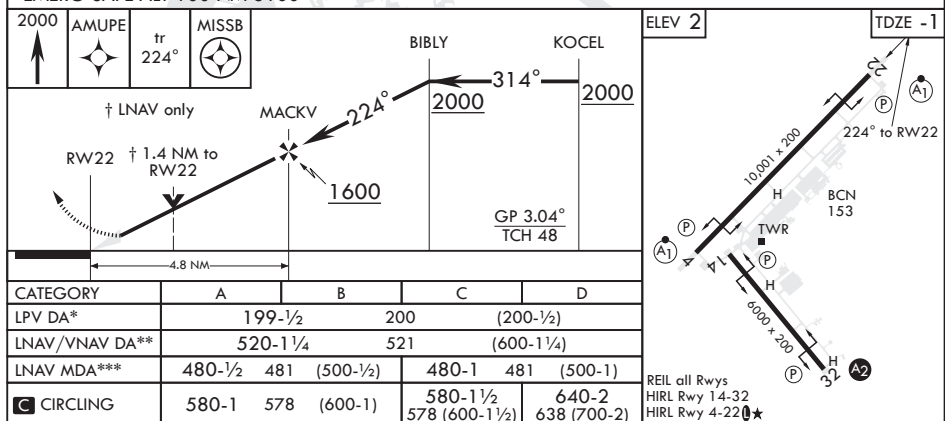
ATIS★ 279.55	APP CON/DEP CON 123.85 256.9	NAVY NEW ORLEANS TOWER★ 123.8 0★ 340.2 (CTAF)	GND CON 121.6 270.35	CLNC DEL 128.35 263.0	ASR/PAR
-----------------	---------------------------------	--	-------------------------	--------------------------	---------

DME/DME RNP-0.3 NA

For uncompensated
Baro-VNAV systems,
LNAV/VNAV NA below -15°C
(5°F) or above 54°C (130°F).



EMERG SAFE ALT 100 NM 3100



NEW ORLEANS, LOUISIANA

29°50'N - 90°02'W NEW ORLEANS NAS JRB (ALVIN CALLENDER FLD) (KNBG)

Amdt 2 13SEP18

RNAV (GPS) RWY 22

SC-4, 31 DEC 2020 to 28 JAN 2021

SC-4, 31 DEC 2020 to 28 JAN 2021