

NEW ORLEANS, LOUISIANA

RNAV (GPS) RWY 4

AL-630 (USN)

NEW ORLEANS NAS JRB (ALVIN CALLENDER FLD) (KNBG)

APCH CRS 044°	Rwy Idg	10,001
	TDZE	-2
	Arpt Elev	2

T * When ALS inop, increase vis CAT ABCD to 1 5/8 mile.
 ** When ALS inop, increase CAT AB vis to 1 mile, CAT CD vis to 1 1/8 miles.

ALSF-1

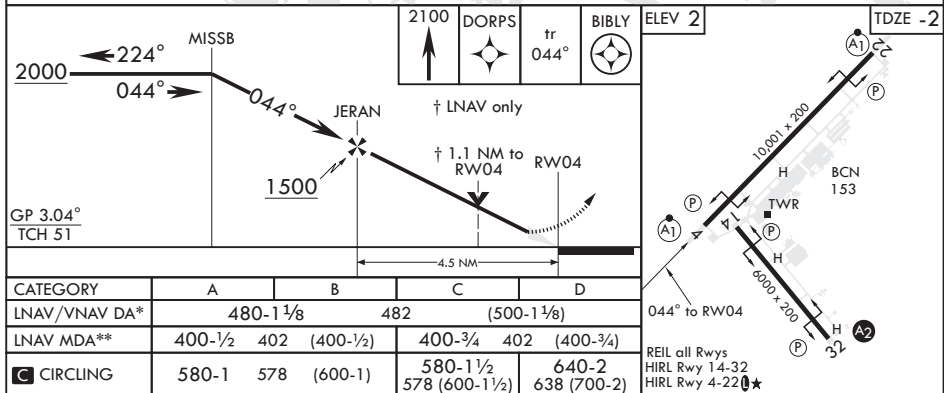
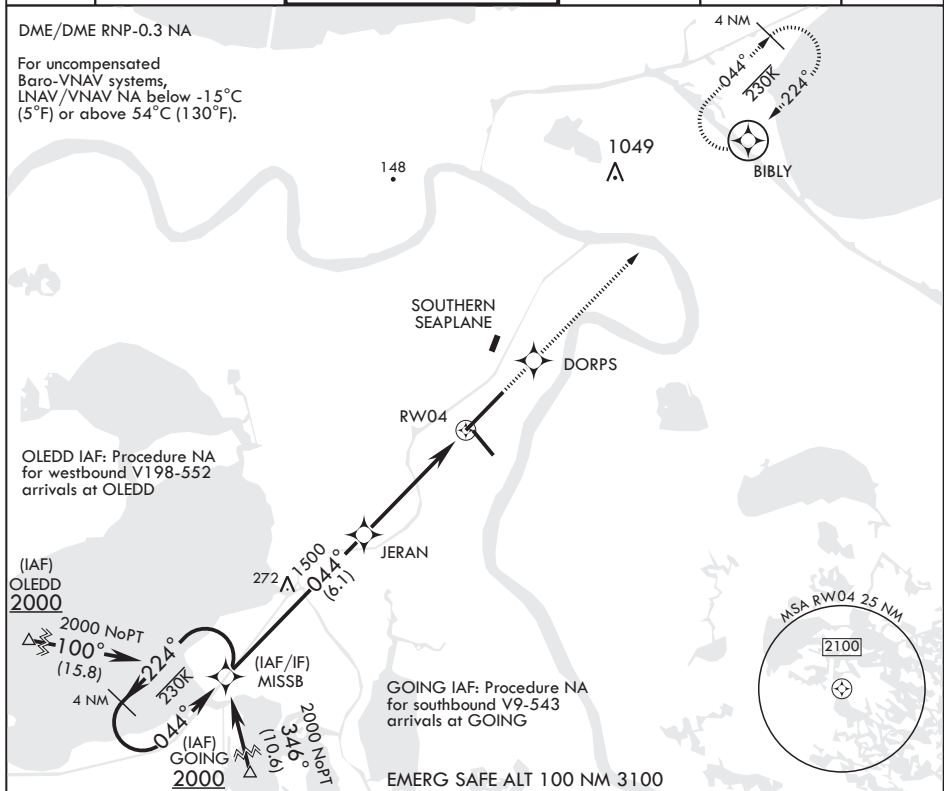


MISSED APPROACH: Climb to 2100 direct DORPS track 044° to BIBLY and hold.

ATIS★ 279.55	APP CON/DEP CON 123.85 256.9	NAVY NEW ORLEANS TOWER★ 123.8 0★ 340.2 (CTAF)	GND CON 121.6 270.35	CLNC DEL 128.35 263.0	ASR/PAR
-----------------	---------------------------------	--	-------------------------	--------------------------	---------

DME/DME RNP-0.3 NA

For uncompensated
Baro-VNAV systems,
LNAV/VNAV NA below -15°C
(5°F) or above 54°C (130°F).



NEW ORLEANS, LOUISIANA

29°50'N - 90°02'W NEW ORLEANS NAS JRB (ALVIN CALLENDER FLD) (KNBG)

Amdt 4 13SEP18

RNAV (GPS) RWY 4

SC-4, 31 DEC 2020 to 28 JAN 2021

SC-4, 31 DEC 2020 to 28 JAN 2021