

NEW ORLEANS, LOUISIANA

VOR/DME or TACAN RWY 4

VORTAC HRV 114.1 Chan 88	APCH CRS 046°	Rwy Idg 10,001 TDZE -2 Arpt Elev 2
--	-------------------------	---

AL-630 [USN]

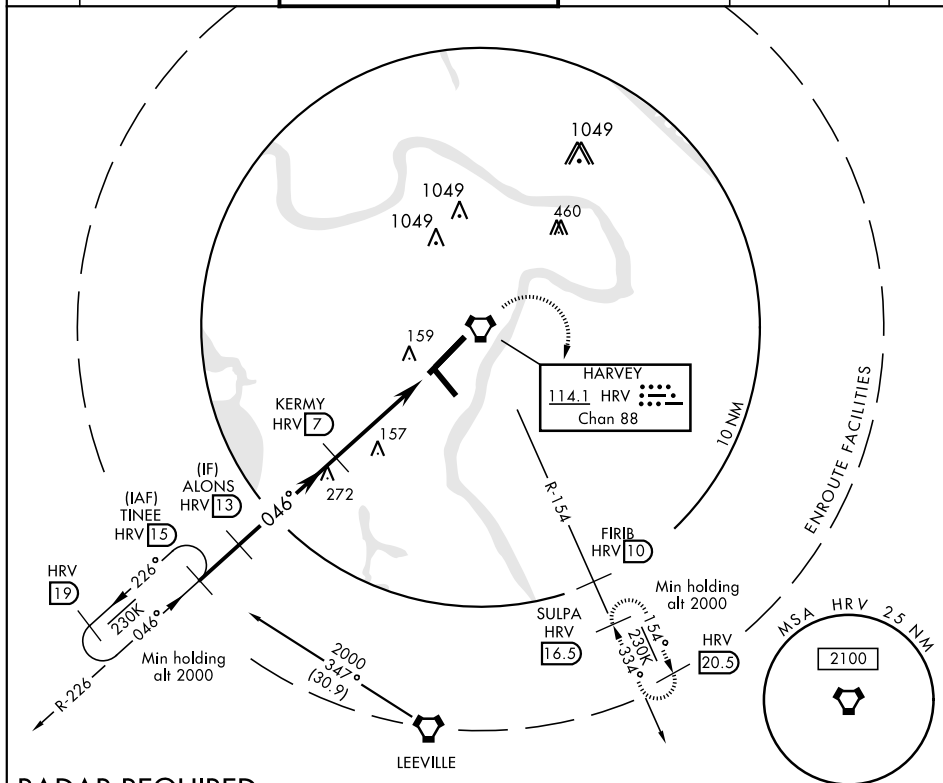
NEW ORLEANS NAS JRB
(ALVIN CALLENDER FLD) (KNBG)

T * When ALS inop, increase vis CAT AB to 1 mile, CAT CD to $1\frac{3}{8}$ miles.



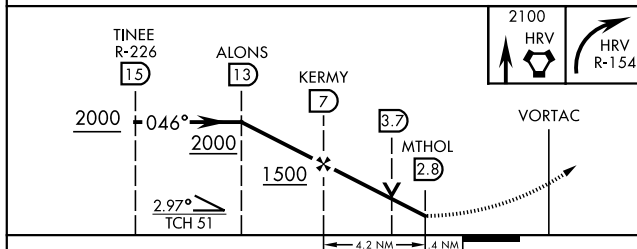
MISSED APPROACH: Climb direct HRV VORTAC, then climbing right turn to 2100, intercept HRV R-154 to SULPA and hold. Cross FIRIB (HRV R-154/10) at 2000.

ATIS ★ 279.55	NEW ORLEANS APP CON 123.85 256.9	NAVY NEW ORLEANS TOWER ★ 0 123.8 340.2 (CTAF)	GND CON 121.6 270.35	CLNC DEL 128.35 263.0	ASR/ PAR
------------------	-------------------------------------	--	-------------------------	--------------------------	-------------

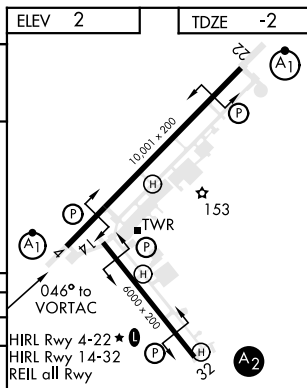


RADAR REQUIRED

EMERG SAFE ALT 100 NM 3100



CATEGORY	A	B	C	D
S-4 *	480-1/2	482 (500-1/2)	480-1	482 (500-1)
C CIRCLING	580-1	578 (600-1)	580-1 1/2 578 (600-1 1/2)	640-2 638 (700-2)



NEW ORLEANS, LOUISIANA

29° 50' N-90° 02' W

NEW ORLEANS NAS JRB (KNBG)

Amdt 2 13SEP18

VOR/DME or TACAN RWY 4

SC-4, 31 DEC 2020 to 28 JAN 2021

SC-4, 31 DEC 2020 to 28 JAN 2021