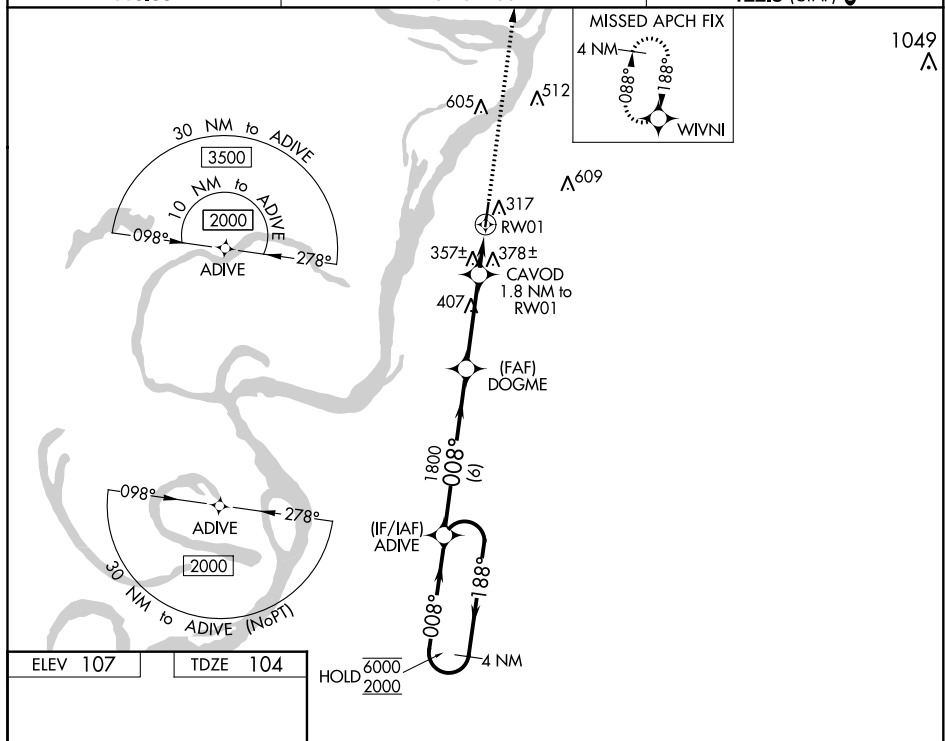


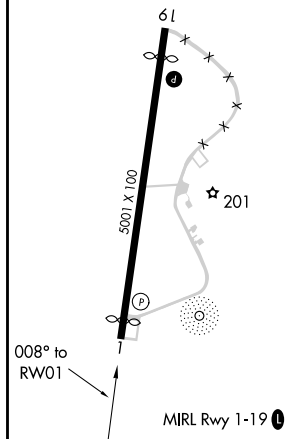
RNAV (GPS) RWY 1
VICKSBURG MUNI (VKS)

T Circling NA for Cat D west of Rwy 1-19. Procedure NA at night.
A Rwy 1 helicopter visibility reduction below 1 SM NA.

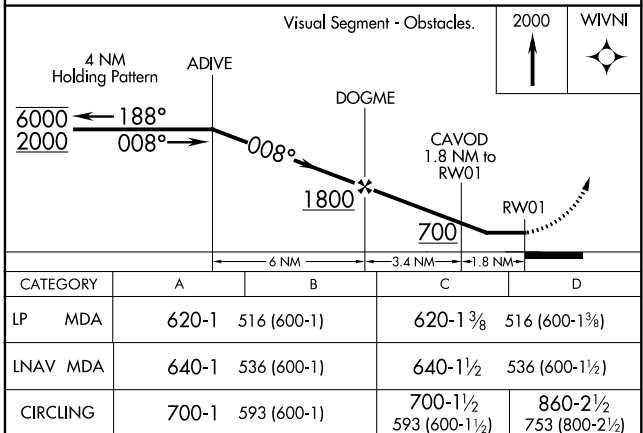
MISSED APPROACH: Climb to 2000 direct WIVN and hold.

UNICOM
122.8 (CTAF) **L**

TDZE 104



Visual Segment - Obstacles.



SC-4, 31 DEC 2020 to 28 JAN 2021

SC-4, 31 DEC 2020 to 28 JAN 2021