

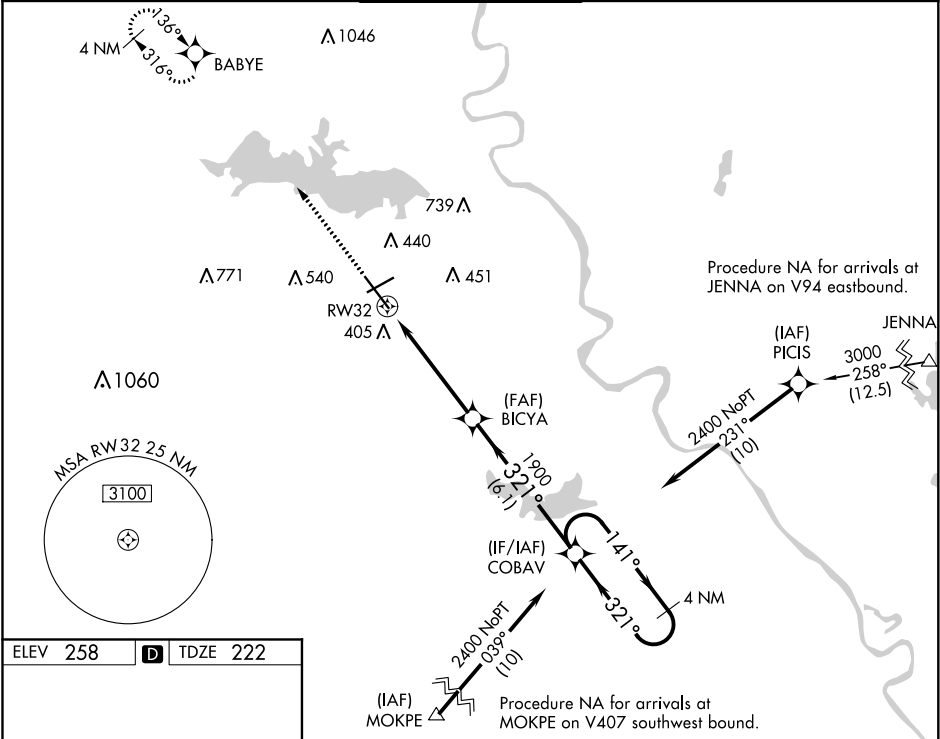
WAAS CH <b>77913</b> <b>W32A</b>	APP CRS <b>321°</b>	Rwy Idg <b>7976</b> TDZE <b>222</b> Apt Elev <b>258</b>
--	------------------------	---

RNAV (GPS) RWY 32

SHREVEPORT RGNL (SHV)

RNP APCH	MALSR	MISSED APPROACH: Climb to 2500 direct BABYE and hold.
Rwy 32, helicopter visibility reduction below RVR 4000 NA. For uncompensated Baro-VNAV systems, LNAV/VNAV NA below -6°C or above 54°C. Inop table does not apply to LPV all Cats. For inop ALS, increase LNAV Cat A and B visibility to RVR 5500.		
ASR		

ATIS <b>128.45</b>	SHREVEPORT APP CON <b>119.9 335.55</b>	SHREVEPORT TOWER <b>121.4 236.775</b>	GND CON <b>121.175 236.775</b>	CLNC DEL <b>124.65</b>
-----------------------	---	--	-----------------------------------	---------------------------



2500 BABYE				4 NM Holding Pattern			
*LNAV only.				COBAV			
RW32				BICYA 1900			
1.3 NM				3.8 NM			
1.3 NM				6.1 NM			
CATEGORY				A			
LPV DA				422/40			
LNAV/VNAV DA				623/45			
LNAV MDA				680/45			
CIRCLING				760-1			
				502 (600-1)			
				980-2			
				722 (800-2)			
				1100-2 $\frac{3}{4}$			
				842 (900-2 $\frac{3}{4}$ )			