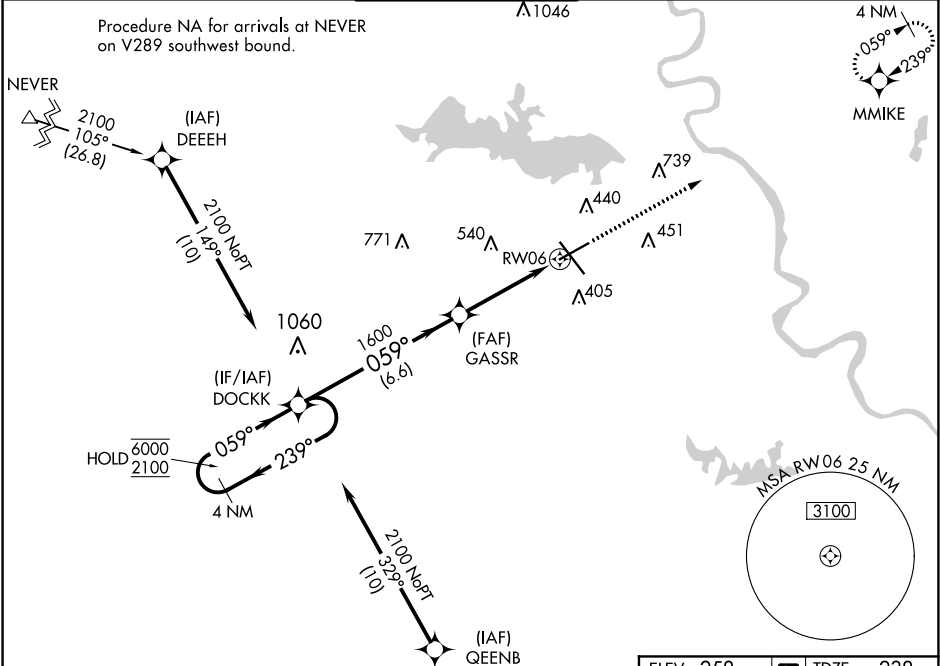


APP CRS	Rwy Idg	6202
059°	TDZE	238
	Apt Elev	258

RNAV (GPS) RWY 6
SHREVEPORT RGNL (SHV)

RNP APCH	MISSED APPROACH: Climb to 3000 direct MMIKE and hold.
Rwy 6 helicopter visibility reduction below 3/4 SM NA.	

ATIS 128.45	SHREVEPORT APP CON 119.9 335.55	SHREVEPORT TOWER 121.4 236.775	GND CON 121.175 236.775	CLNC DEL 124.65
-----------------------	---	--	-----------------------------------	---------------------------



Procedure NA for arrivals at NEVER on V289 southwest bound.

Procedure NA for arrivals at EXITE on V407 southwest bound and on V114 southeast bound.

4 NM Holding Pattern DOCKK

6000 ← 239°
2100 059° →

059°

GASSR

1600

1.3 NM to RWY 06

3.00° TCH 51

3000 MMIKE

6.6 NM 2.8 NM 1.3 NM

CATEGORY	A	B	C	D
LNNAV MDA	700-1 462 (500-1)		700-1 3/8 462 (500-1 3/8)	
CIRCLING	760-1 502 (600-1)		980-2 722 (800-2)	1100-2 3/4 842 (900-2 3/4)

ELEV 258 TDZE 238

REIL Rwy 6 and 24
TDZ/CL Rwy 14
HIRL Rwy 14-32
MIRL Rwy 6-24

SC-4, 31 DEC 2020 to 28 JAN 2021

SC-4, 31 DEC 2020 to 28 JAN 2021