

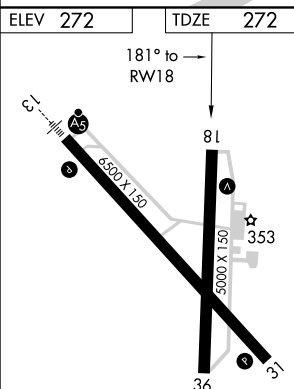
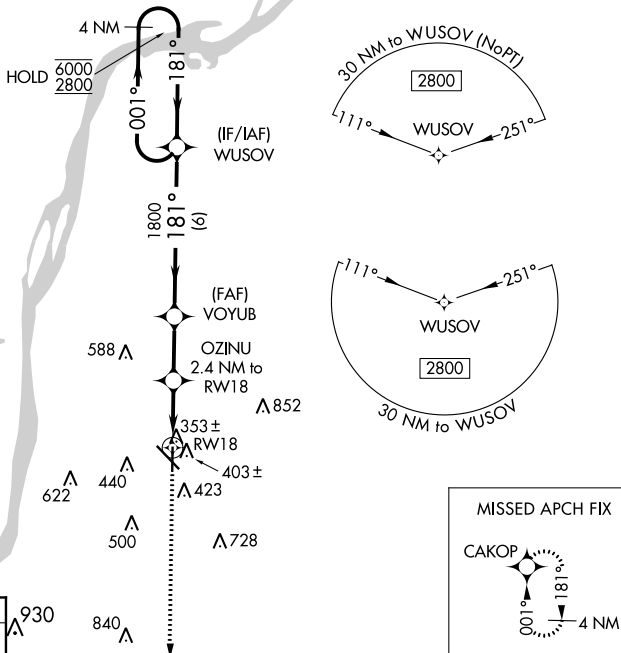
RNAV (GPS) RWY 18

HARDY-ANDERS FIELD NATCHEZ-ADAMS COUNTY (HEZ)

T Circling Rwy 36 NA at night. Rwy 18 helicopter
A visibility reduction below $\frac{3}{4}$ SM NA.

MISSED APPROACH: Climb to 2800 direct CAKOP and hold.

HOUSTON CENTER
120.975 299.6

UNICOM
122.8 (CTAF) **L**

HIRL Rwy 13-31
MIRL Rwy 18-36 **L**

Visual Segment - Obstacles.

2800 ↑

CAKOP

4 NM Holding Pattern

WUSOV

VOYUB

OZINU
2.4 NM to RW18

1 NM to RW18

RW18

181°

181°

1060

1800

6000

2800

1 NM 1.4 NM 2.3 NM 6 NM

CATEGORY	A	B	C	D
LP MDA	620-1 348 (400-1)			
LNAV MDA	660-1 388 (400-1)		660-1½ 388 (400-1½)	
CIRCLING	740-1 468 (500-1)	800-1 528 (600-1)	1020-2¼ 748 (800-2¼)	1220-3 948 (1000-3)