

VOR/DME HEZ	APP CRS	Rwy Idg	5000
110.0	197°	TDZE	272
Chan 37		Apt Elev	272

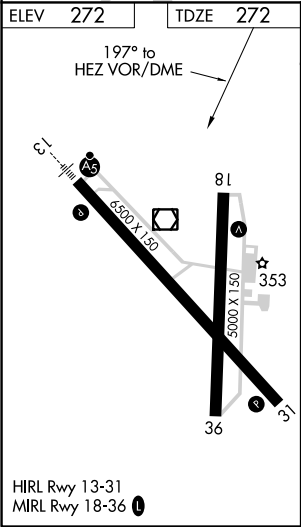
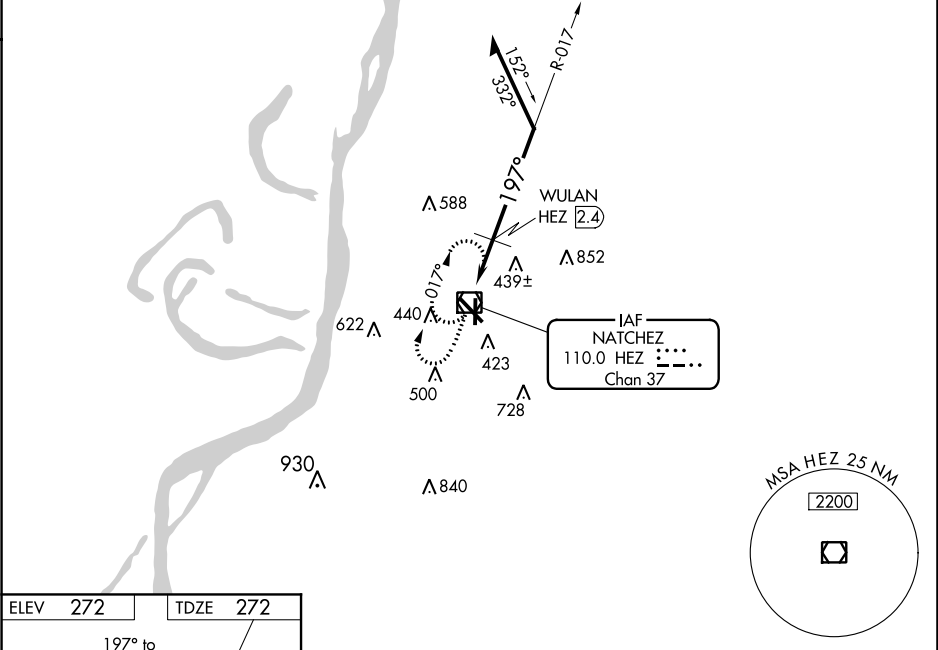
VOR RWY 18

HARDY-ANDERS FIELD NATCHEZ-ADAMS COUNTY (HEZ)

Circling to Rwy 36 NA at night.
Rwy 18 helicopter visibility reduction below 1 SM NA.
Straight-in and Circling Rwy 18 NA at night.

MISSED APPROACH: Climb to 1100 then climbing right turn to 2000 in HEZ VOR/DME holding pattern, continue climb-in-hold to 2000.

AWOS-3PT 124.675	HOUSTON CENTER 120.975 299.6	UNICOM 122.8 (CTAF) 0
---------------------	---------------------------------	--------------------------



	1100	2000	HEZ	
	↑	↻		
				HEZ VOR/DME
				WULAN HEZ 2.4
				017°
				197°
				2000
				1020
				2.4 NM
				Remain within 10 NM
CATEGORY	A	B	C	D
S-18	1020-1 748 (800-1)	1020-1¼ 748 (800-1¼)	1020-2 748 (800-2)	748 (800-2)
CIRCLING	1020-1 748 (800-1)	1020-1¼ 748 (800-1¼)	1020-2¼ 748 (800-2¼)	1220-3 948 (1000-3)
WULAN FIX MINIMUMS				
S-18	700-1	428 (500-1)	700-1¼	428 (500-1¼)
CIRCLING	740-1 468 (500-1)	800-1 528 (600-1)	1020-2¼ 748 (800-2¼)	1220-3 948 (1000-3)