

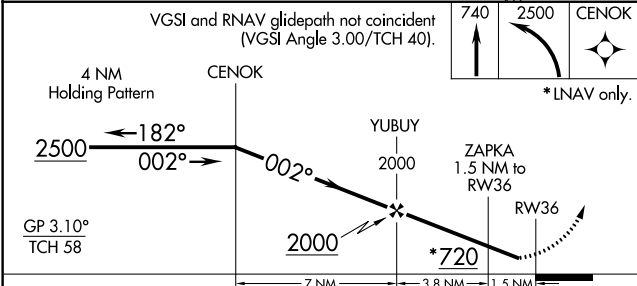
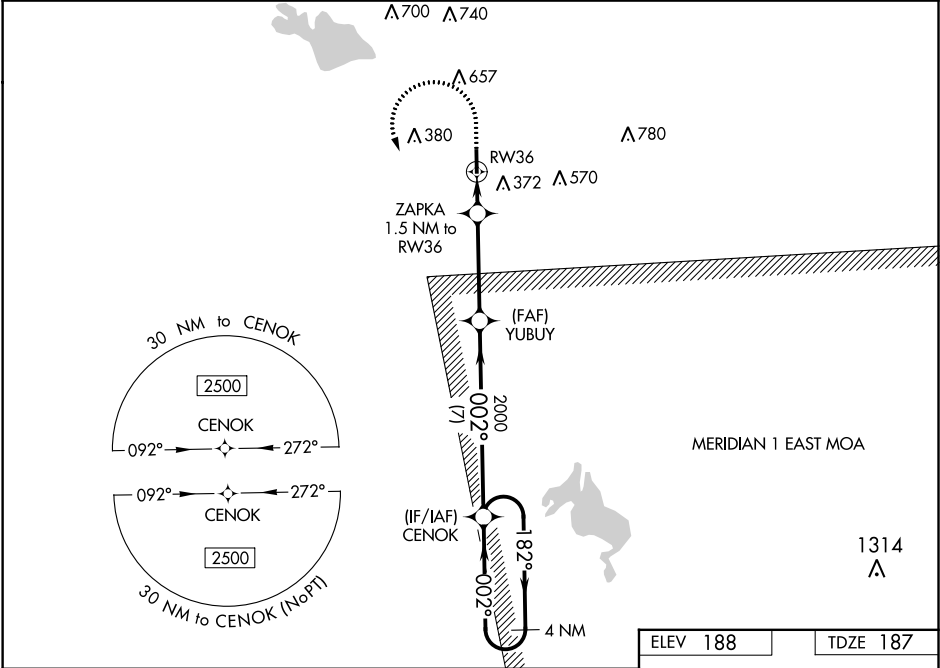
WAAS CH 61340 W36A	APP CRS 002°	Rwy Idg TDZE 187 Apt Elev 188
--	------------------------	---

RNAV (GPS) RWY 36

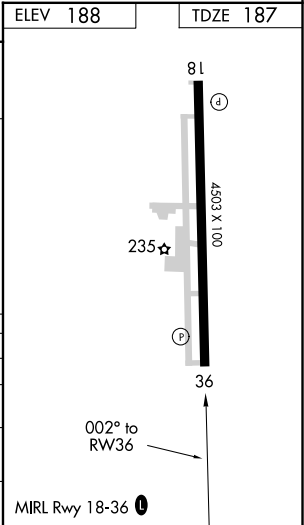
COLUMBUS-LOWNDES COUNTY (UBS)

RNP APCH.	MISSED APPROACH: Climb to 740 then climbing left turn to 2500 direct CENOK and hold.
-----------	--

COLUMBUS APP CON ★ 135.6 323.275	UNICOM 122.8 (CTAF) 0
--	---------------------------------



CATEGORY	A	B	C	D
LPV DA		527-1	340 (400-1)	
LNAV/VNAV DA		526-1	339 (400-1)	
LNAV MDA	600-1	413 (500-1)	600-1½	413 (500-1½)
CIRCLING	760-1 572 (600-1)	780-1 592 (600-1)	1040-2½ 852 (900-2½)	1040-2¾ 852 (900-2¾)



SC-4, 31 DEC 2020 to 28 JAN 2021

SC-4, 31 DEC 2020 to 28 JAN 2021