

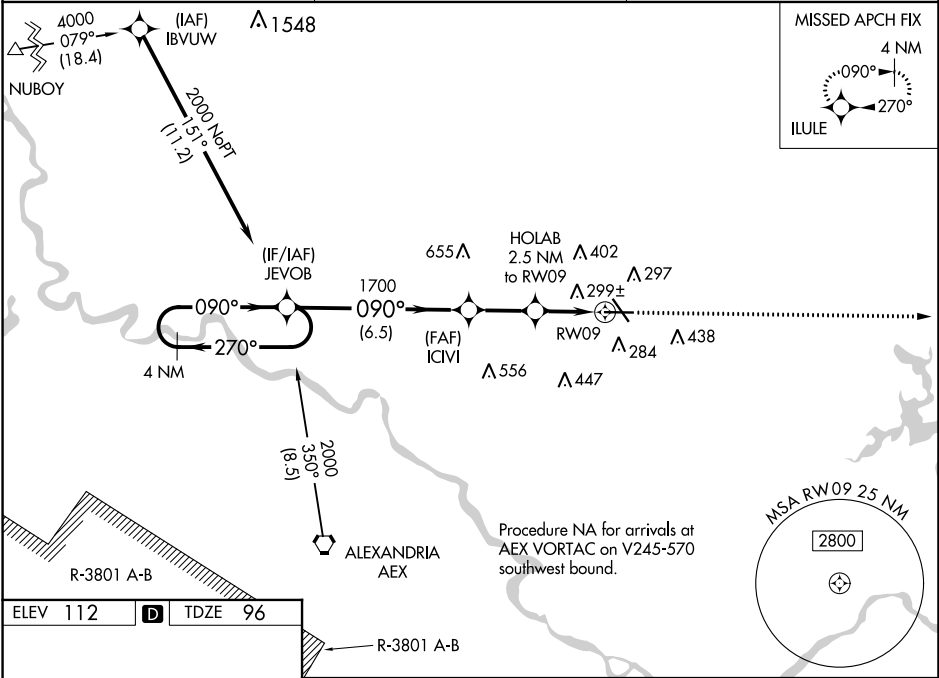
WAAS CH <b>77617</b> <b>W09A</b>	APP CRS <b>090°</b>	Rwy Idg TDZE <b>96</b> Apt Elev <b>112</b>
--	------------------------	--

RNAV (GPS) RWY 9  
ESLR RGNL (E5T')

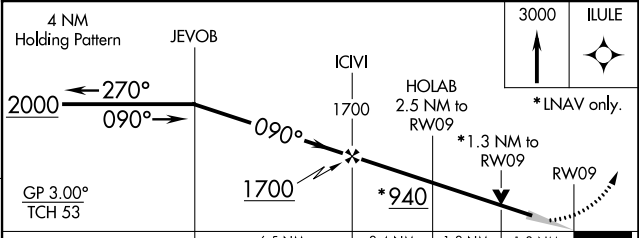
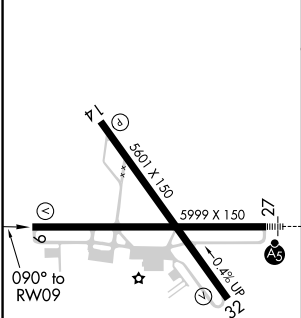
⚠ When VGSI inop, Circling Rwy 14/32 NA at night. Baro-VNAV and VDP NA when using Alexandria Intl altimeter setting. For uncompensated Baro-VNAV systems, LNAV/VNAV NA below -6°C (22°F) or above 54°C (130°F). DME/DME RNP-0.3 NA. When local altimeter setting not received, use Alexandria Intl altimeter setting and increase all DA 35 feet and all MDA 40 feet; increase LNAV/VNAV all Cats visibility 1/8 mile.

MISSED APPROACH: Climb to 3000 direct ILULE and hold.

ESF ASOS <b>119.425</b>	POLK APP CON <b>125.4 254.8</b>	UNICOM <b>122.8 (CTAF) 0</b>
----------------------------	------------------------------------	---------------------------------



ELEV <b>112</b>	<b>D</b>	TDZE <b>96</b>
-----------------	----------	----------------



CATEGORY	A	B	C	D
LPV DA		296-3/4	200 (200-3/4)	
LNAV/VNAV DA		609-13/4	513 (500-13/4)	
LNAV MDA	560-1	464 (500-1)	560-13/8	464 (500-13/8)
CIRCLING	600-1	488 (500-1)	600-11/2	740-2 488 (500-11/2) 628 (700-2)

SC-4, 31 DEC 2020 to 28 JAN 2021

SC-4, 31 DEC 2020 to 28 JAN 2021