

WAAS CH 99413 W18A	APP CRS 179°	Rwy Idg 6508 TDZE 9 Apt Elev 10
--	------------------------	--

RNAV (GPS) RWY 18

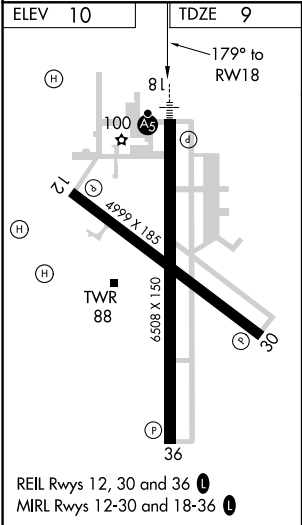
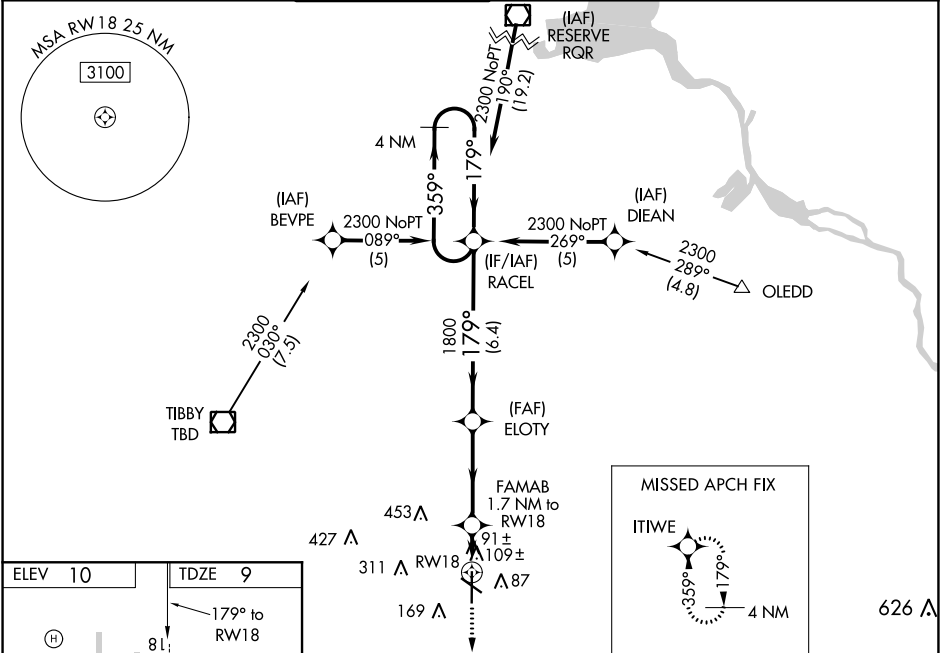
HOUMA-TERREBONNE (HUM)

Baro-VNAV NA when using Louis Armstrong New Orleans Intl altimeter setting.
For uncompensated Baro-VNAV systems, LNAV/VNAV NA below -15°C (5°F) or above 49°C (120°F). DME/DME RNP-0.3 NA. When local altimeter setting not received, use Louis Armstrong New Orleans Intl altimeter setting and increase all DA 77 feet and LNAV/VNAV all Cats visibility ¼ mile, increase all MDA 80 feet, LNAV Cat C visibility ¼ mile and Circling Cat D visibility ¼ mile.
For inoperative MALSR when using Louis Armstrong New Orleans Intl altimeter setting increase LPV all Cats visibility to 1 mile.

MALSR

MISSED APPROACH: Climb to 1900 direct ITIWE and hold.

ATIS 120.25	NEW ORLEANS APP CON 118.9 350.35	HOUMA TOWER ★ 125.3 (CTAF) 346.3	GND CON 123.875	CLNC DEL 118.9 (When twr closed)	UNICOM 122.95
-----------------------	--	--	---------------------------	---	-------------------------



1900	ITIWE	VGSI and RNAV glidepath not coincident (VGSI Angle 3.00/TCH 52).	4 NM	Holding Pattern
*LNAV only.	FAMAB 1.7 NM to RW18	ELOTY	359°	2300
	1800		179°	
	1.7 NM	3.7 NM	6.4 NM	GP 3.00° TCH 52
CATEGORY	A	B	C	D
LPV DA	209-½	200 (200-½)		
LNAV/VNAV DA	450-1	441 (500-1)		
LNAV MDA	440-½	431 (500-½)	440-¾ 431 (500-¾)	440-1 431 (500-1)
CIRCLING	480-1	470 (500-1)	480-1½ 470 (500-1½)	620-2 610 (700-2)