

WAAS
CH **40301**
W35A

APP CRS
348°

Rwy Idg
TDZE **21**
Apt Elev **24**

RNAV (GPS) RWY 35

ACADIANA RGNL (A.R.A.)

RNP APCH.

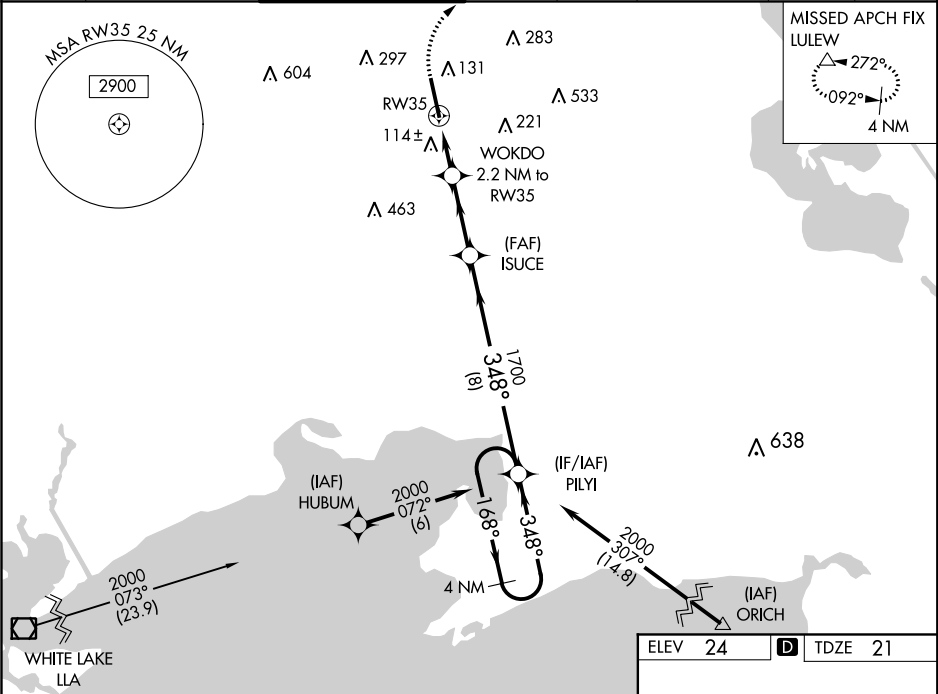
▼

For uncompensated Baro-VNAV systems, LNAV/VNAV NA below -3°C or above 54°C. For inop ALS, increase LNAV/VNAV all Cats visibility to ½ SM and LNAV Cats C/D visibility to 1 SM. Circling NA to Rwys 17W and 35W.

MALSR

MISSED APPROACH: Climb to 440 then climbing right turn to 2000 direct LULEW and hold.

ASOS	LAFAYETTE APP CON★	ACADIANA TOWER★	GND CON	CLNC DEL	CLNC DEL	UNICOM	★
133.325	121.1 268.7	125.0 (CTAF) 0 239.3	121.7	121.7	118.05 (when twr closed)	122.95	122.7



440

2000

LULEW

VGSI and RNAV glidepath not coincident (VGSI Angle 3.00/TCH 52).

*LNAV only.

ISUCE

WOKDO 2.2 NM to RW35

RW35

1700

348°

168°

2000

GP 3.00° TCH 52

1 NM

1.2 NM

2.9 NM

8 NM

CATEGORY	A	B	C	D
LPV DA		221-½	200 (200-½)	
LNAV/ DA		303-½	282 (300-½)	
LNAV MDA	380-½	359 (400-½)	380-¾	359 (400-¾)
CIRCLING	440-1 416 (500-1)	480-1 456 (500-1)	600-1½ 576 (600-1½)	680-2 656 (700-2)

HIRL Rwy 17-35

Seaway Rwy 17W-35W