

VORTAC LFT	APP CRS	Rwy Idg	8002
109.8	328°	TDZE	21
Chan 35		Apt Elev	24

VOR RWY 35
ACADIANA RGNL (A.R.A.)

⚠

Circling NA to Rwy's 17W and 35W.
DME required.
Inop table does not apply.

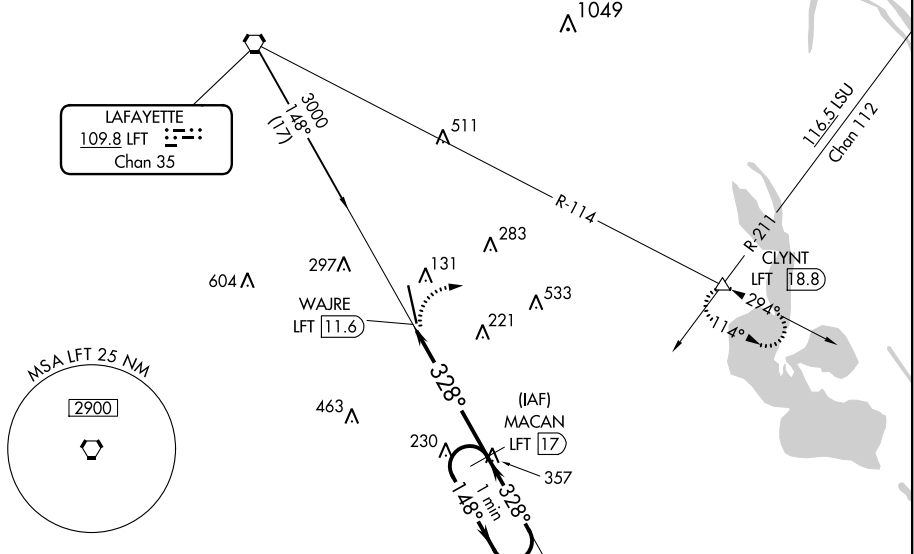
MALSR

AS

MISSED APPROACH: Climbing right turn to 2000 on heading 080° and LFT R-114 to CLYNT INT/LFT 18.8 DME and hold.

ASOS	LAFAYETTE APP CON *	ACADIANA TOWER *	GND CON	CLNC DEL	CLNC DEL	UNICOM	0 *
133.325	121.1 268.7	125.0 (CTAF) 0 239.3	121.7	121.7	118.05 (when twr closed)	122.95	122.7

DME REQUIRED



ELEV 24 **D** TDZE 21

HIRL Rwy 16-34 **Ⓛ**

Seaway Rwy 16W-34W **Ⓛ** *

35W 328° 5.5 NM from FAF

2000 **hdg** 080°

LFT R-114

CLYNT **△**

MACAN LFT 17

One Minute Holding Pattern

WJRE LFT 11.6

LFT 13

328°

148°

1800

CATEGORY	A	B	C	D	E
S-35	540-1½	519 (600-½)	540-1⅔	519 (600-1⅓)	
C CIRCLING	540-1	516 (600-1)	600-1½ 576 (600-1½)	680-2 656 (700-2)	900-3 876 (900-3)

SC-4, 31 DEC 2020 to 28 JAN 2021

SC-4, 31 DEC 2020 to 28 JAN 2021