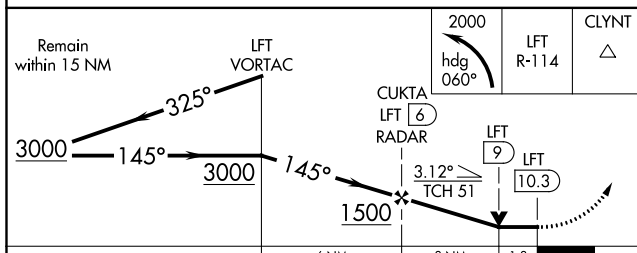
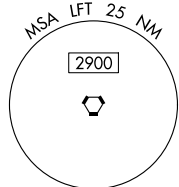



VOR or TACAN RWY 17
ACADIANA RGNL (ARA)

MISSED APPROACH: Climbing left turn to 2000 on heading 060° and LFT VORTAC R-114 to CLYNT INT/18.8 DME and hold.



CATEGORY	A	B	C	D	E
S-17	500-3/4	476 (500-3/4)	500-1 1/4	476 (500-1 1/4)	
 CIRCLING	500-1	476 (500-1)	600-1 1/2 576 (600-1 1/2)	680-2 656 (700-2)	900-3 876 (900-3)

