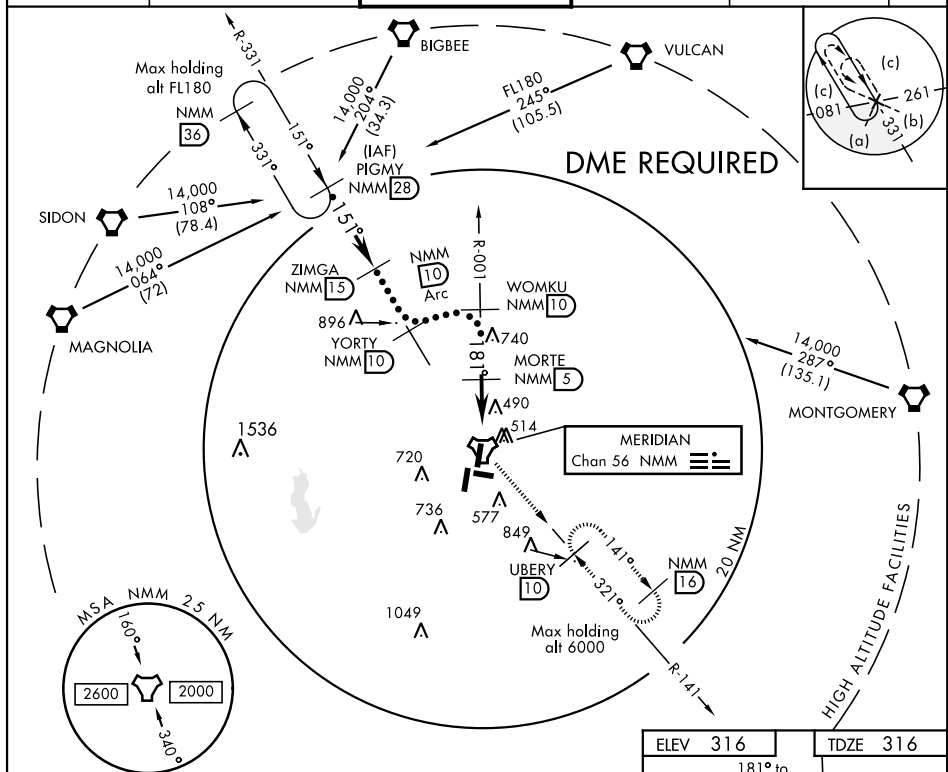


HI-TACAN RWY 19L

TACAN Chan 56	NMM	APCH CRS 181°	Rwy Idg 8001 TDZE 316 Arpt Elev 316	JAL-5079 [USN]	MERIDIAN NAS (MC CAIN FIELD) (KNMM)
-------------------------	-----	-------------------------	--	----------------	-------------------------------------

▼ * When ALS inop, increase CAT CDE vis to 1 $\frac{3}{8}$ miles.

ATIS ★ 290.525	MERIDIAN APP CON 120.95 276.4	NAVY MC CAIN TOWER ★ 126.2 340.2	GND CON 336.4	CLNC DEL 301.0	ASR/ PAR
-------------------	----------------------------------	-------------------------------------	------------------	-------------------	-------------



SC-4, 31 DEC 2020 to 28 JAN 2021

EMERG SAFE ALT 100 NM 3700

Diagram showing flight profile and altitudes:

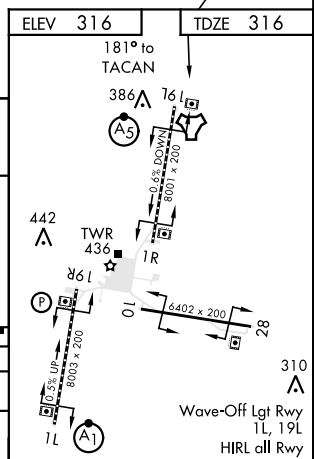
- 14,000
- 6000
- 3000
- 2700
- 1900
- 2100
- 3.00° TCH 50
- 81°
- 4.1 NM

Waypoints and Obstacles:

- PIGMY R-331 (28)
- ZIMGA (15)
- YORTY R-331 (10)
- WOMKU R-001 (10)
- MORTE (5)
- NMM (1.3)
- VERBIC (0.9)
- TACAN

Obstacle Data:

Category	C	D	E
S-19L *	800-1	484 (500-1)	
CIRCLING	840-1½ 524 (600-1½)	880-2 564 (600-2)	1080-2¾ 764 (800-2¾)



HI-TACAN RWY 19L